

VOR/DME SPW <b>110.0</b> Chan <b>37</b>	APP CRS <b>292°</b>	Rwy Idg TDZE Apt Elev	<b>5501</b> <b>1338</b> <b>1339</b>
---	------------------------	-----------------------------	---

# VOR RWY 30

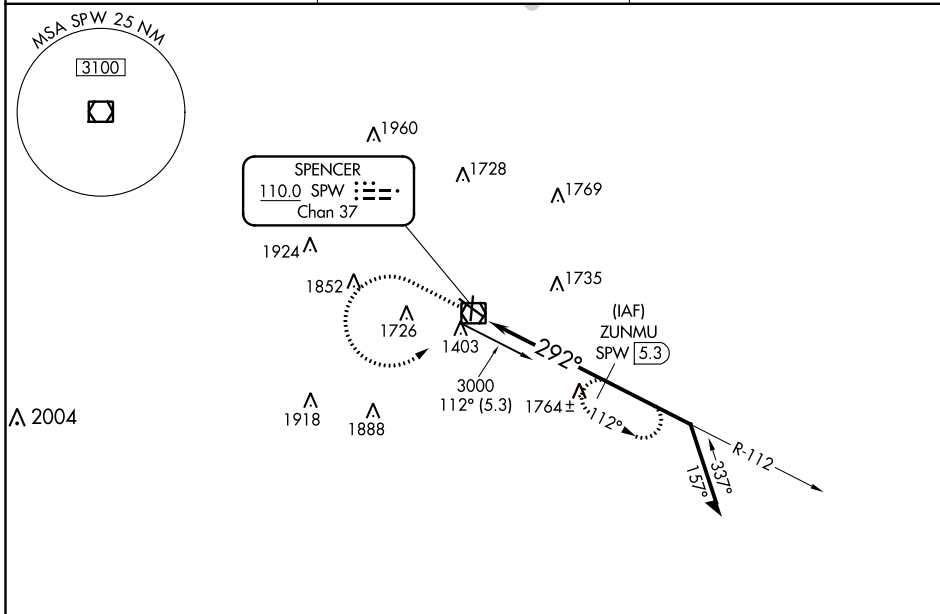
SPENCER MUNI (SPW)

DME required.

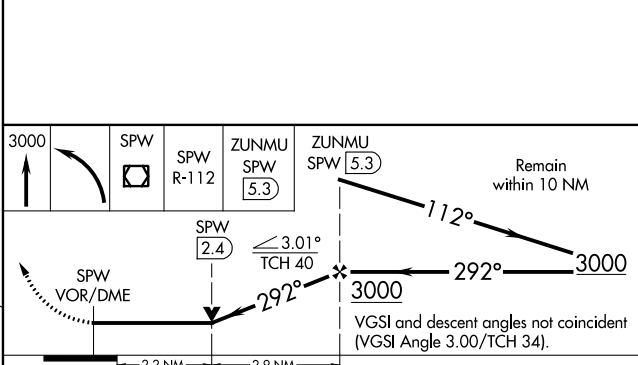
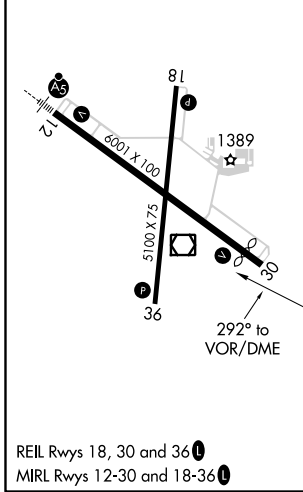
**⚠** VDP NA when using Estherville altimeter setting.  
**⚠** When local altimeter setting not received, use Estherville altimeter setting and increase all MDA 60 feet and increase S-30 Cat C/D visibility ½ SM and Circling Cat C/D visibility ¼ SM.

MISSED APPROACH: Climb to 3000, then left turn direct SPW VOR/DME, then on SPW VOR/DME R-112 to ZUNMU/SPW 5.3 DME and hold.

ASOS <b>126.625</b>	MINNEAPOLIS CENTER <b>127.75 257.7</b>	UNICOM <b>123.0 (CTAF) 0</b>
------------------------	---	---------------------------------



ELEV 1339	TDZE 1338
-----------	-----------



CATEGORY	A	B	C	D
S-30	2080-1 742 (800-1)	2080-1¼ 742 (800-1¼)	2080-2	742 (800-2)
<b>C</b> CIRCLING	2080-1 741 (800-1)	2080-1¼ 741 (800-1¼)	2100-2¼ 761 (800-2¼)	2100-2½ 761 (800-2½)

SPENCER, IOWA  
Amdt 3C 28FEB19

43°10'N-95°12'W

# SPENCER MUNI (SPW) VOR RWY 30

NC-3, 09 SEP 2021 to 07 OCT 2021

NC-3, 09 SEP 2021 to 07 OCT 2021