

WAAS CH <b>69439</b> <b>W17A</b>	APP CRS <b>167°</b>	Rwy Idg TDZE <b>5999</b> <b>541</b> Apt Elev <b>550</b>
--	------------------------	--

# RNAV (GPS) RWY 17

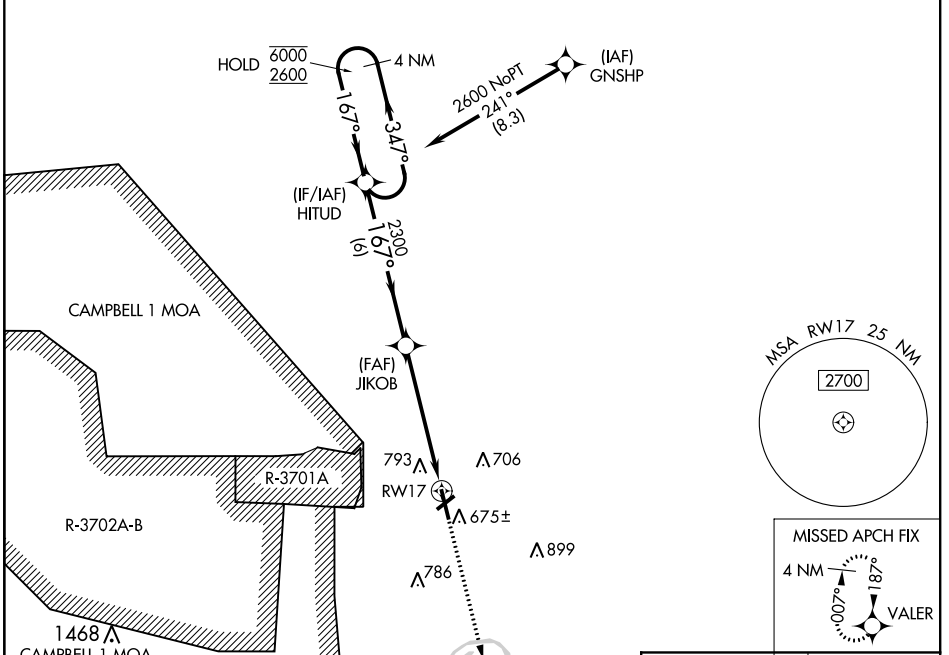
OUTLAW FIELD (CKV)

RNP APCH.

⚠ Circling NA W of Rwy 17-35. Circling Rwy 23 NA at night. Baro-VNAV and VDP NA when using Campbell AAF (Fort Campbell) altimeter setting. Rwy 17 helicopter visibility reduction below 3/4 SM NA. For uncompensated Baro-VNAV systems, LNAV/VNAV NA below -1.3°C or above 54°C.

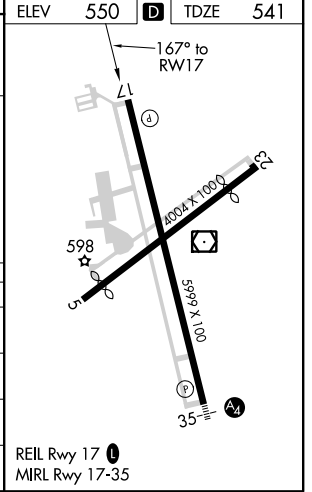
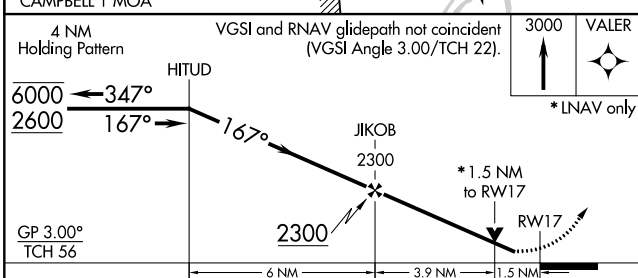
MISSED APPROACH: Climb to 3000 direct VALER and hold.

ASOS <b>134.575</b>	CAMPBELL APP CON <b>134.35 307.025</b>	UNICOM <b>122.8 (CTAF) 0</b>
------------------------	---	---------------------------------



SE-1, 09 SEP 2021 to 07 OCT 2021

SE-1, 09 SEP 2021 to 07 OCT 2021



CATEGORY	A	B	C	D
LPV DA	823-7/8		282 (300-7/8)	
LNAV/VNAV DA	991-1 1/2		450 (500-1 1/2)	
LNAV MDA	1060-1	519 (600-1)	1060-1 3/8	519 (600-1 3/8)
<b>C</b> CIRCLING	1060-1	510 (600-1)	1060-1 1/2	1200-2 650 (700-2)