

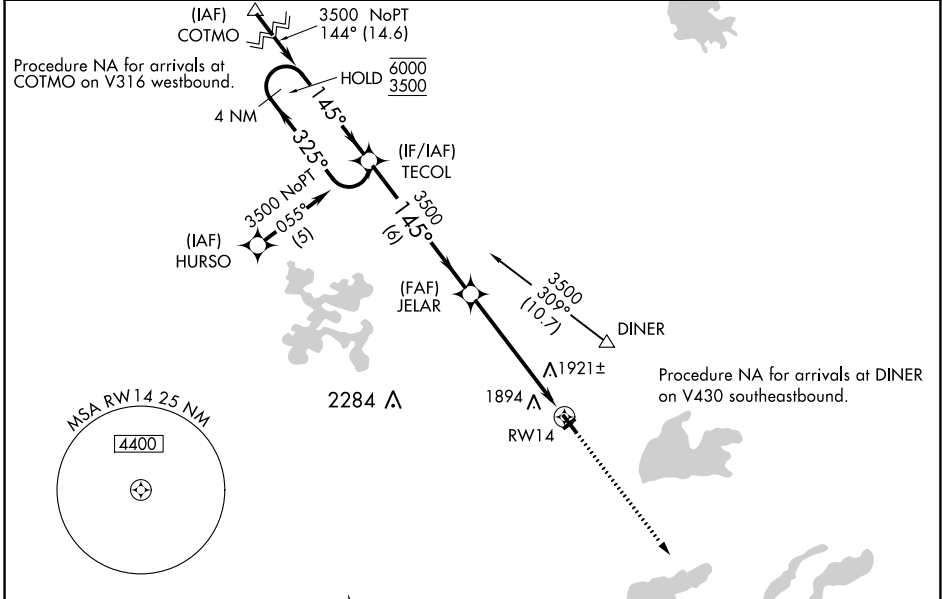
APP CRS	Rwy Idg	3802 (day)
145°	TDZE	3601 (night)
	Apt Elev	1705

RNAV (GPS) RWY 14

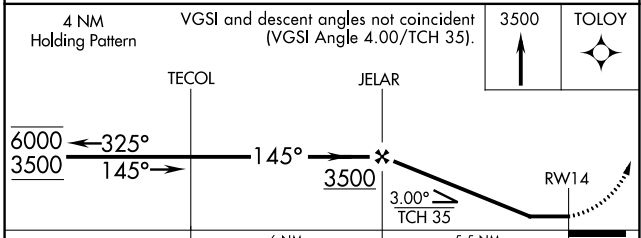
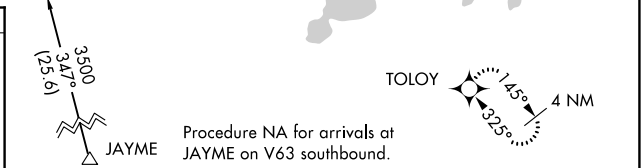
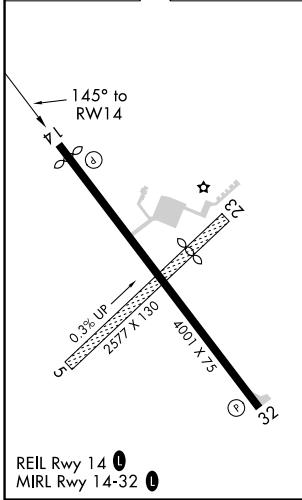
KINGS LAND O'LAKES (LNL)

RNP APCH.	MISSED APPROACH: Climb to 3500 direct TOLOY and hold.
<p>▼ Circling NA to Rwys 5 and 23.</p> <p>▲ Procedure NA at night.</p> <p>Rwy 14 helicopter visibility reduction below 1 SM NA.</p>	

AWOS-3 119.525	MINNEAPOLIS CENTER 133.65 281.5	UNICOM 122.8 (CTAF) 0
--------------------------	---	---------------------------------



ELEV 1705	TDZE 1705
-----------	-----------



CATEGORY	A	B	C	D
LNAV MDA	2220-1	515 (600-1)	2220-1½ 515 (600-1½)	NA
C CIRCLING	2220-1 515 (600-1)	2240-1 535 (600-1)	2240-1½ 535 (600-1½)	NA

EC-3, 09 SEP 2021 to 07 OCT 2021

EC-3, 09 SEP 2021 to 07 OCT 2021