

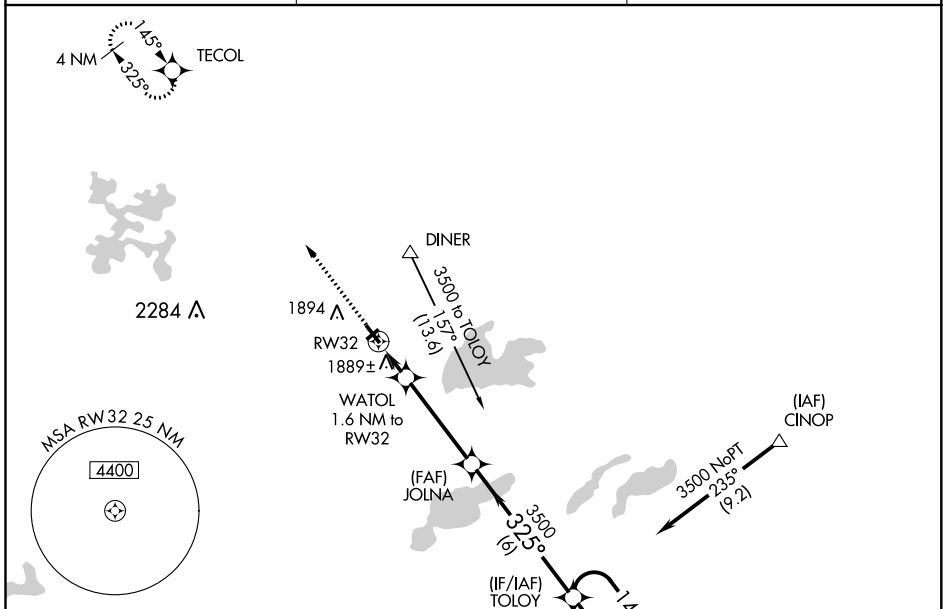
APP CRS	Rwy Idg	4001
325°	TDZE	1704
	Apt Elev	1705

RNAV (GPS) RWY 32

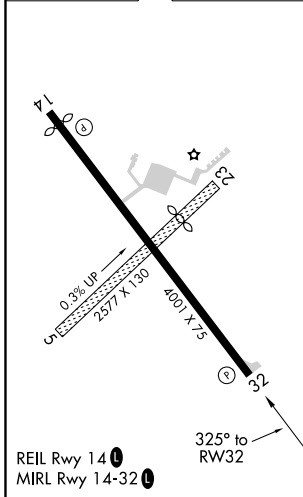
KINGS LAND O'LAKES (LNL)

RNP APCH-GPS.	MISSED APPROACH: Climb to 3500 direct TECOL and hold.
<p>⚠ Circling NA to Rwy 5 and 23. Procedure NA at night. Rwy 32 helicopter visibility reduction below 1 SM NA.</p>	

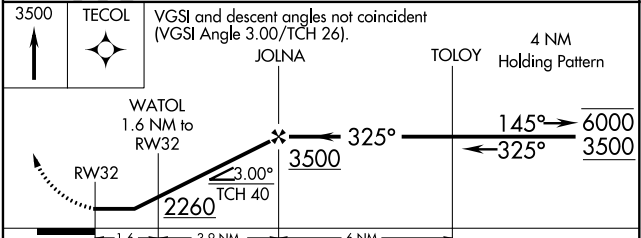
AWOS-3 119.525	MINNEAPOLIS CENTER 133.65 281.5	UNICOM 122.8 (CTAF) 0
--------------------------	---	---------------------------------



ELEV 1705	TDZE 1704
-----------	-----------



Procedure NA for arrivals at JAYME on V63 southbound.



CATEGORY	A	B	C	D
LNNAV MDA	2140-1	436 (500-1)	2140-1¼ 436 (500-1¼)	NA
C CIRCLING	2200-1 495 (500-1)	2240-1 535 (600-1)	2240-1½ 535 (600-1½)	NA

EC-3, 09 SEP 2021 to 07 OCT 2021

EC-3, 09 SEP 2021 to 07 OCT 2021