

LOC I-MVN <b>111.7</b>	APP CRS <b>231°</b>	Rwy Idg <b>5572</b>
		TDZE <b>471</b>
		Apt Elev <b>480</b>

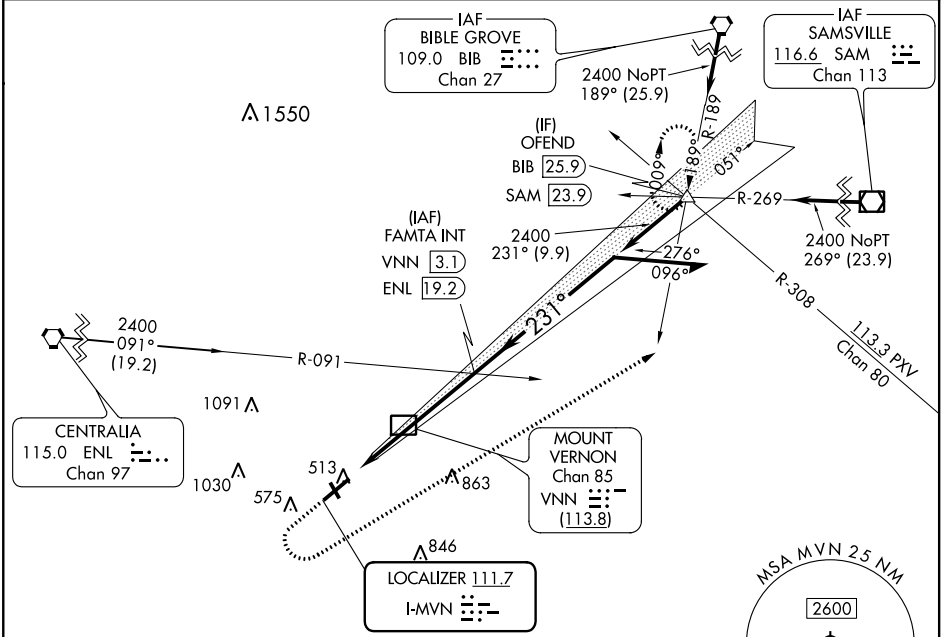
# ILS or LOC RWY 23

MOUNT VERNON (MVN)

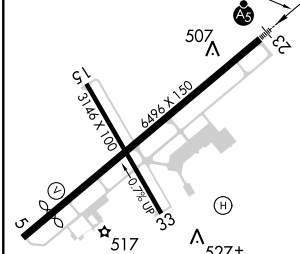
**⚠** Circling Rwy 15, 33 NA at night. VDP NA when using Centralia altimeter setting. When local altimeter setting not received, use Centralia altimeter setting and increase all DA 45 feet and all MDA 60 feet and increase S-LOC 23 Cat C/D and Circling Cat C visibility ¼ SM. For inop ALS, when using Centralia altimeter setting, increase S-LOC 23 Cat C/D visibility to 1¼ SM.

**MALSR** MISSED APPROACH: Climb to 2300 then climbing left turn to 2400 on heading 060° and on BIB VORTAC R-189 to OFEND and hold.

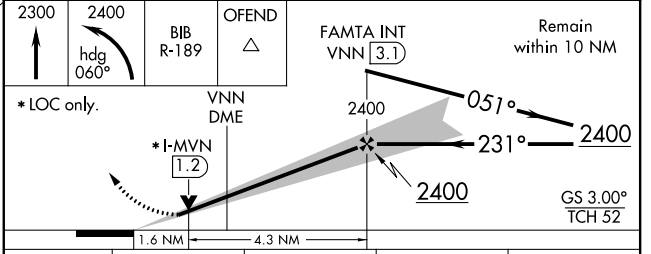
AWOS-3PT <b>118.2</b>	KANSAS CITY CENTER <b>127.7 351.825</b>	UNICOM <b>123.0 (CTAF)</b>
--------------------------	--------------------------------------------	-------------------------------



ELEV 480	<b>D</b>	TDZE 471
----------	----------	----------



FAF to MAP 5.9 NM					
Knots	60	90	120	150	180
Min.Sec	5:54	3:56	2:57	2:22	1:58



CATEGORY	A	B	C	D
S-ILS 23	671-½ 200 (200-½)			
S-LOC 23	1020-½ 549 (600-½)	1020-1⅛ 549 (600-1⅛)		
<b>C</b> CIRCLING	1020-1 540 (600-1)	1140-1¾ 660 (700-1¾)	1380-3 900 (1000-3)	