

LOC I-UV D	APP CRS	Rwy ldg	5600
111.7	092°	TDZE	418
		Apt Elev	452

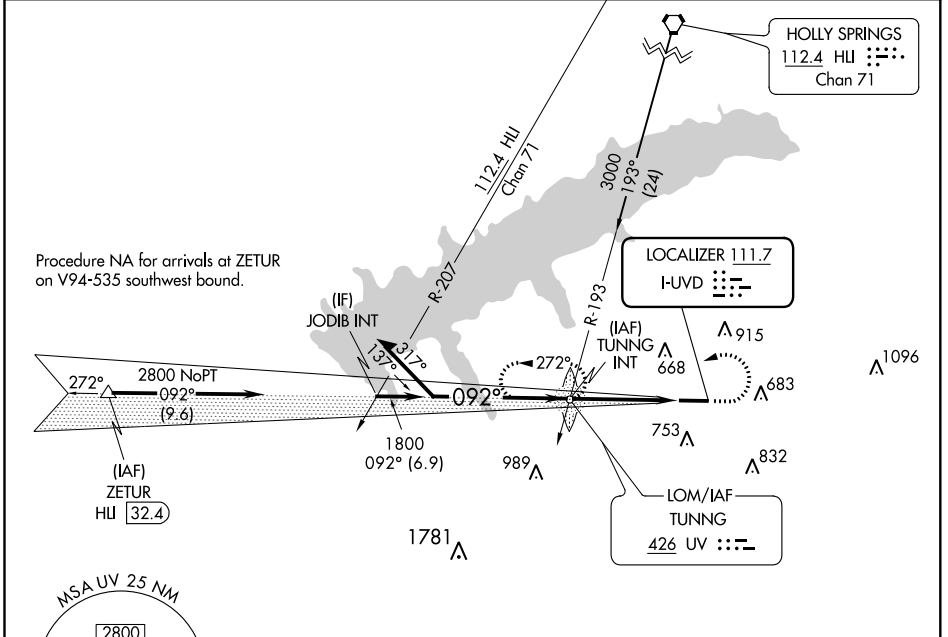
LOC Z RWY 9

UNIVERSITY-OXFORD (UOX)

NA ADF required. When local altimeter setting not received, use Olive Branch altimeter setting and increase all MDA 100 feet; increase S-LOC Cats C, D visibility $\frac{3}{8}$ mile and Circling Cat C visibility $\frac{1}{4}$ mile.

MISSED APPROACH: Climb to 1100 then climbing left turn to 2800 direct TUNNG LOM/INT and hold, continue climb-in-hold to 2800.

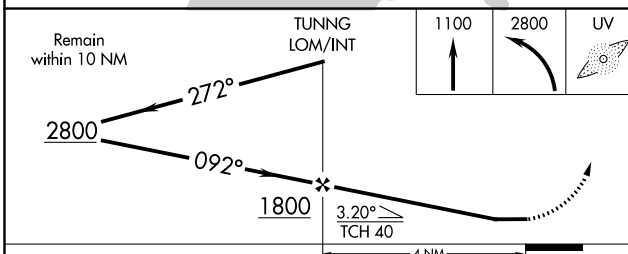
AWOS-3PT 132.725	MEMPHIS CENTER 128.5 381.4	GCO 135.075	UNICOM 123.0 (CTAF)
----------------------------	--------------------------------------	-----------------------	-------------------------------



SC-4, 09 SEP 2021 to 07 OCT 2021

SC-4, 09 SEP 2021 to 07 OCT 2021

ELEV 452	TDZE 418
----------	----------



CATEGORY	A	B	C	D
S-LOC 9	920-1	502 (500-1)	920-1 $\frac{3}{8}$	502 (500-1 $\frac{3}{8}$)
C CIRCLING	980-1 528 (600-1)	1060-1 608 (700-1)	1380-2 $\frac{3}{4}$ 928 (1000-2 $\frac{3}{4}$)	1380-3 928 (1000-3)

MIRL Rwy 9-27 **0**
REIL Rwy 27

FAF to MAP 4 NM

Knots	60	90	120	150	180
Min:Sec	4:00	2:40	2:00	1:36	1:20