

WAAS CH 63235 W27A	APP CRS 272°	Rwy Idg TDZE Apt Elev	5600 452 452
--	------------------------	-----------------------------	---

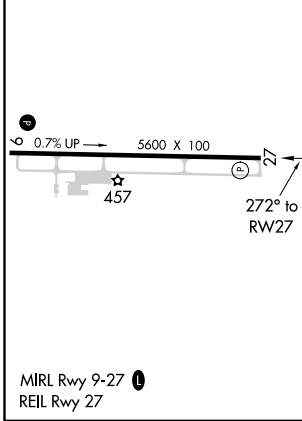
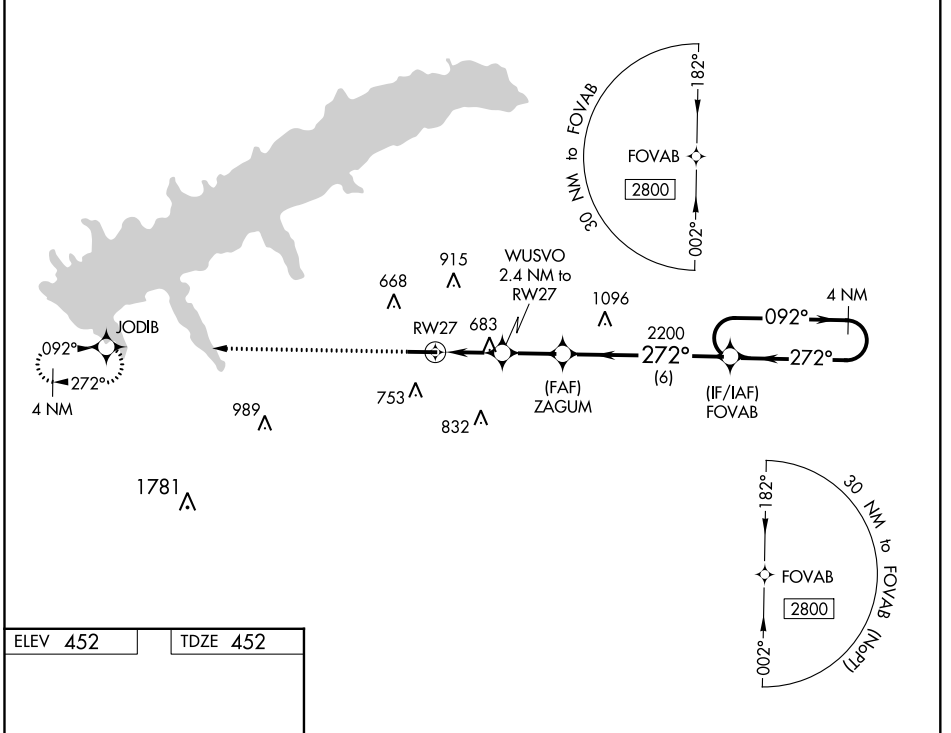
RNAV (GPS) RWY 27

UNIVERSITY-OXFORD (UOX)

▽ **△** DME/DME RNP-0.3 NA. VDP NA with Olive Branch altimeter setting. When local altimeter setting not received, use Olive Branch altimeter setting and increase all MDA 100 feet; increase LNAV and LP Cats C, D visibilities $\frac{3}{8}$ mile, and Circling Cat C visibility $\frac{1}{4}$ mile. Rwy 27 helicopter visibility reduction below $\frac{3}{4}$ SM NA.

MISSED APPROACH: Climb to 2800 direct JODIB and hold.

AWOS-3PT 132.725	MEMPHIS CENTER 128.5 381.4	GCO 135.075	UNICOM 123.0 (CTAF) 0
----------------------------	--------------------------------------	-----------------------	---------------------------------



	2800	JODIB						
			WUSVO 2.4 NM to RW27	ZAGUM	FOVAB		4 NM Holding Pattern	
			1.1 NM to RW27	3.50° TCH 53	2200	092° →	2800	← 272°
			1.1	1.3 NM	2.2 NM	6 NM		
CATEGORY		A	B	C	D			
LP MDA		940-1	488 (500-1)	940-1 $\frac{3}{8}$	488 (500-1 $\frac{3}{8}$)			
LNAV MDA		960-1	508 (600-1)	960-1 $\frac{3}{8}$	508 (600-1 $\frac{3}{8}$)			
C CIRCLING		980-1 528 (600-1)	1060-1 608 (700-1)	1380-2 $\frac{3}{4}$ 928 (1000-2 $\frac{3}{4}$)	1380-3 928 (1000-3)			

SC-4, 09 SEP 2021 to 07 OCT 2021

SC-4, 09 SEP 2021 to 07 OCT 2021