

# LAMP5 SEVEN DEPARTURE

AWOS-3PT  
128.575  
GRAY DEP CON  
120.075 323.15  
CLNC DEL  
121.7

**TOP ALTITUDE:  
ASSIGNED BY ATC**

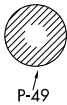
SONET  
N31° 42.75'  
W97° 36.29'

2700  
091°  
(17)

R-271

WACO  
115.3 ACT  
Chan 100  
N31° 39.74'  
W97° 16.14'  
L-19, H-6

3000  
036°  
(42)



R-6302C

R-6302D

R-6302A

R-6302B

GOOCH SPRINGS  
112.5 AGJ  
Chan 72  
N31° 11.13'  
W98° 08.51'

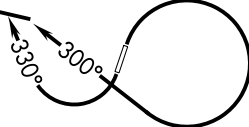
R-098

278°

3800  
320°  
202°  
(65)

R-018

STONEWALL  
113.8 STV  
Chan 85  
N30° 12.41'  
W98° 42.35'  
L-19, H-7



TAKEOFF MINIMUMS  
Rwys 1, 19: Standard.

NOTE: RADAR required.  
NOTE: WACO TRANSITION for aircraft inbound to terminal area airports.

NOTE: Chart not to scale.

## DEPARTURE ROUTE DESCRIPTION

TAKEOFF RUNWAY 1: Climbing right turn heading 300° (to assigned altitude) to intercept and proceed on AGJ R-098. Thence. . .

TAKEOFF RUNWAY 19: Climbing right turn heading 330° (to assigned altitude) to intercept and proceed on AGJ R-098. Thence. . .

. . . on (transition) or (assigned route).

STONEWALL TRANSITION (LAMP57.STV): From over AGJ VORTAC on AGJ R-202 and STV R-018 to STV VORTAC.

WACO TRANSITION (LAMP57.ACT): From over AGJ VORTAC on AGJ R-036 to SONET INT, then on ACT R-271 to ACT VORTAC.

# LAMP5 SEVEN DEPARTURE

(LAMP57.AGJ) 10OCT19