

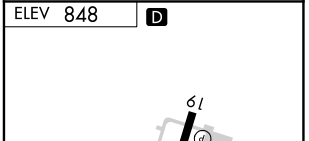
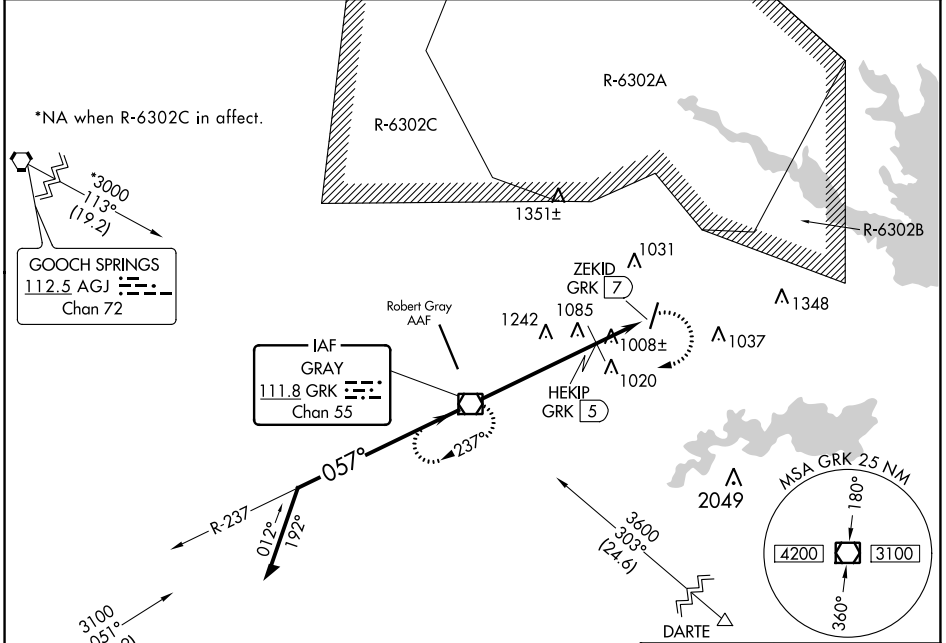
VOR/DME GRK 111.8 Chan 55	APP CRS 057°	Rwy Idg TDZE Apt Elev 848	N/A N/A 848
--	------------------------	--	-------------------

VOR-A
SKYLARK FLD (IL.E)

NA Circling Rwy 19 NA at night.
When local altimeter setting not received, use Robert Gray AAF altimeter setting and increase all MDA 60 feet.

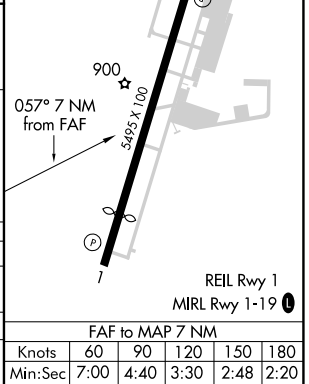
MISSED APPROACH: Climbing right turn to 3000 direct GRK VOR/DME and hold.

AWOS-3PT 128.575	GRAY APP CON 120.075 323.15	CLNC DEL 121.7	UNICOM 122.7 (CTAF) D
----------------------------	---------------------------------------	--------------------------	--



GRK VOR/DME	3000	GRK	<input checked="" type="checkbox"/>
HEKIP GRK 5		ZEKID GRK 7	

CATEGORY	A	B	C	D
C CIRCLING	1620-1 772 (800-1)	1620-1¼ 772 (800-1¼)	1620-2¼ 772 (800-2¼)	NA
HEKIP FIX MINIMUMS (DME REQUIRED)				
C CIRCLING	1320-1 472 (500-1)	1360-1 512 (600-1)	1440-1½ 592 (600-1½)	NA



SC-3, 09 SEP 2021 to 07 OCT 2021

SC-3, 09 SEP 2021 to 07 OCT 2021