

LOC/DME I-UA <b>108.5</b> Chan <b>22</b>	APP CRS <b>016°</b>	Rwy Idg TDZE Apt Elev <b>5500</b> <b>666</b> <b>666</b>
--	------------------------	--

# ILS Y or LOC Y RWY 2

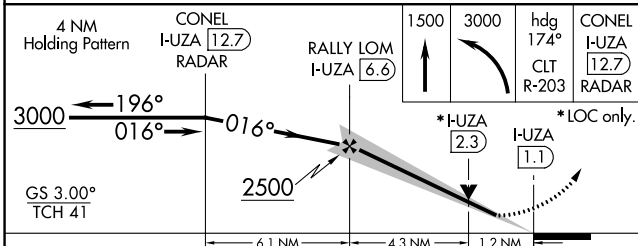
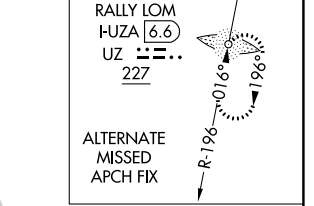
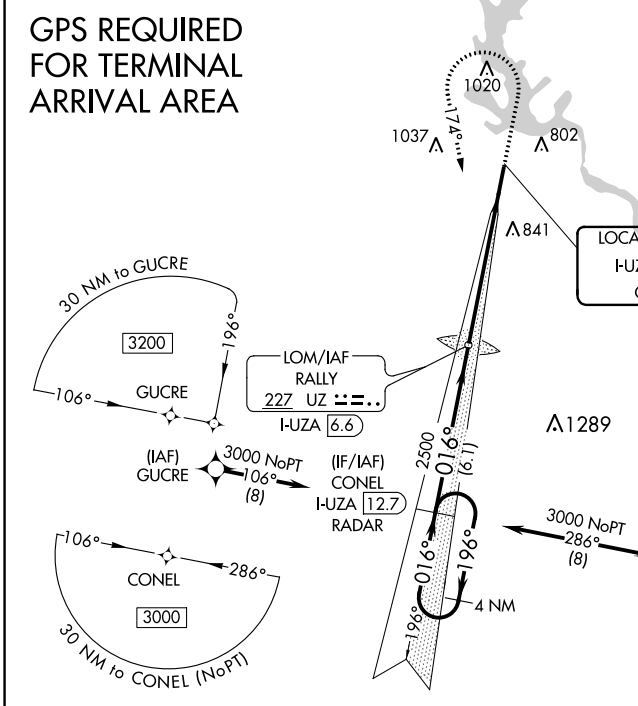
ROCK HILL/YORK COUNTY/BRYANT FIELD (UZA)

**NA** ADF or DME required. VDP NA with Charlotte/Douglas Intl altimeter setting. When local altimeter setting not received, use Charlotte/Douglas Intl altimeter setting and increase all DA 45 feet and all MDA 60 feet. Increase S-LOC 2 Cat C/D visibility 1/4 mile. For inop MALSR, increase S-LOC 2 Cat C/D visibility to 1 1/8 mile. For inop MALSR, when using Charlotte/Douglas Intl altimeter setting, increase S-LOC 2 Cat C/D visibility to 1 3/8 mile.

**MALSR**

**MISSED APPROACH:** Climb to 1500 then climbing left turn to 3000 on heading 174° and CLT VOR/DME R-203 to CONEL/I-UA 12.7 DME/RADAR and hold.

ASOS <b>120.775</b>	CHARLOTTE APP CON <b>120.05 307.8</b>	CLNC DEL <b>126.85</b>	UNICOM <b>123.05 (CTAF)</b> <b>U</b>
------------------------	--	---------------------------	---



ELEV 666	TDZE 666
FAF to MAP 5.5 NM	
Knots	60 90 120 150 180
Min:Sec	5:30 3:40 2:45 2:12 1:50

CATEGORY	A	B	C	D
S-ILS 2	866-1/2 200 (200-1/2)			
S-LOC 2	1080-1/2 414 (500-1/2)	1080-3/4 414 (500-3/4)		
<b>C</b> CIRCLING	1140-1 474 (500-1)	1160-1 494 (500-1)	1340-2 674 (700-2)	1340-2 1/4 674 (700-2 1/4)

SE-2, 09 SEP 2021 to 07 OCT 2021

SE-2, 09 SEP 2021 to 07 OCT 2021