

LOC/DME I- UZA	APP CRS	Rwy Ldg	5500
108.5	016°	TDZE	666
Chan 22		Apt Elev	666

ILS Z or LOC Z RWY 2

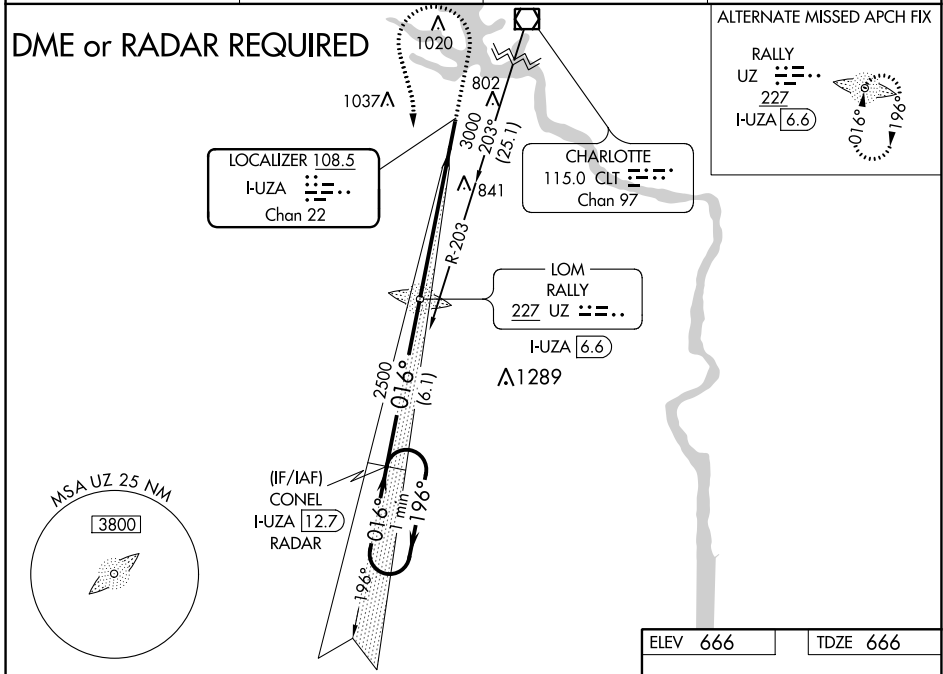
ROCK HILL/YORK COUNTY/BRYANT FIELD (UZA)

NA ADF or DME required. VDP NA with Charlotte/Douglas Intl altimeter setting. When local altimeter setting not received, use Charlotte/Douglas Intl altimeter setting and increase all DA 45 feet and all MDA 60 feet. Increase S-LOC 2 Cat C/D visibility 1/4 mile. For inop MALSRL, increase S-LOC 2 Cat C/D visibility to 1 1/8 mile. For inop MALSRL, when using Charlotte/Douglas Intl altimeter setting, increase S-LOC 2 Cat C/D visibility to 1 1/8 mile.



MISSED APPROACH: Climb to 1500 then climbing left turn to 3000 on heading 174° and CLT VOR/DME R-203 to CONEL/I-UZA 12.7 DME/RADAR and hold.

ASOS 120.775	CHARLOTTE APP CON 120.05 307.8	CLNC DEL 126.85	UNICOM 123.05 (CTAF) 1
------------------------	--	---------------------------	---



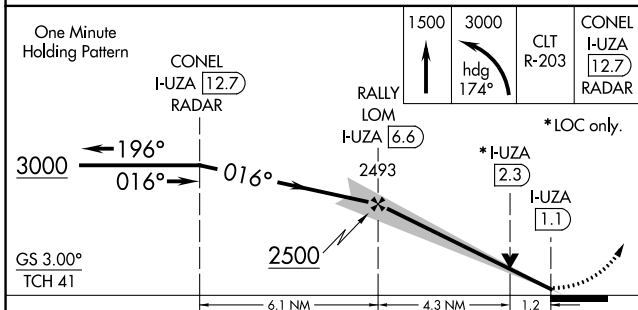
ALTERNATE MISSED APCH FIX

RALLY
UZ 227
I-UZA 6.6

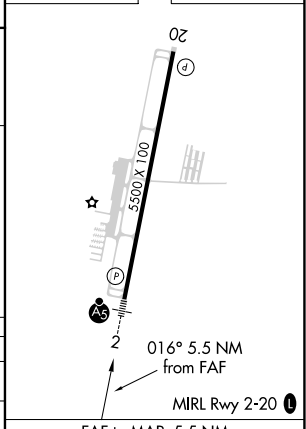


SE-2, 09 SEP 2021 to 07 OCT 2021

SE-2, 09 SEP 2021 to 07 OCT 2021



ELEV 666	TDZE 666
----------	----------



CATEGORY	A	B	C	D
S-ILS 2		866-1/2	200 (200-1/2)	
S-LOC 2	1080-1/2	414 (500-1/2)	1080-3/4	414 (500-3/4)
C CIRCLING	1140-1 474 (500-1)	1160-1 494 (500-1)	1340-2 674 (700-2)	1340-2 1/4 674 (700-2 1/4)

FAF to MAP 5.5 NM					
Knots	60	90	120	150	180
Min:Sec	5:30	3:40	2:45	2:12	1:50