

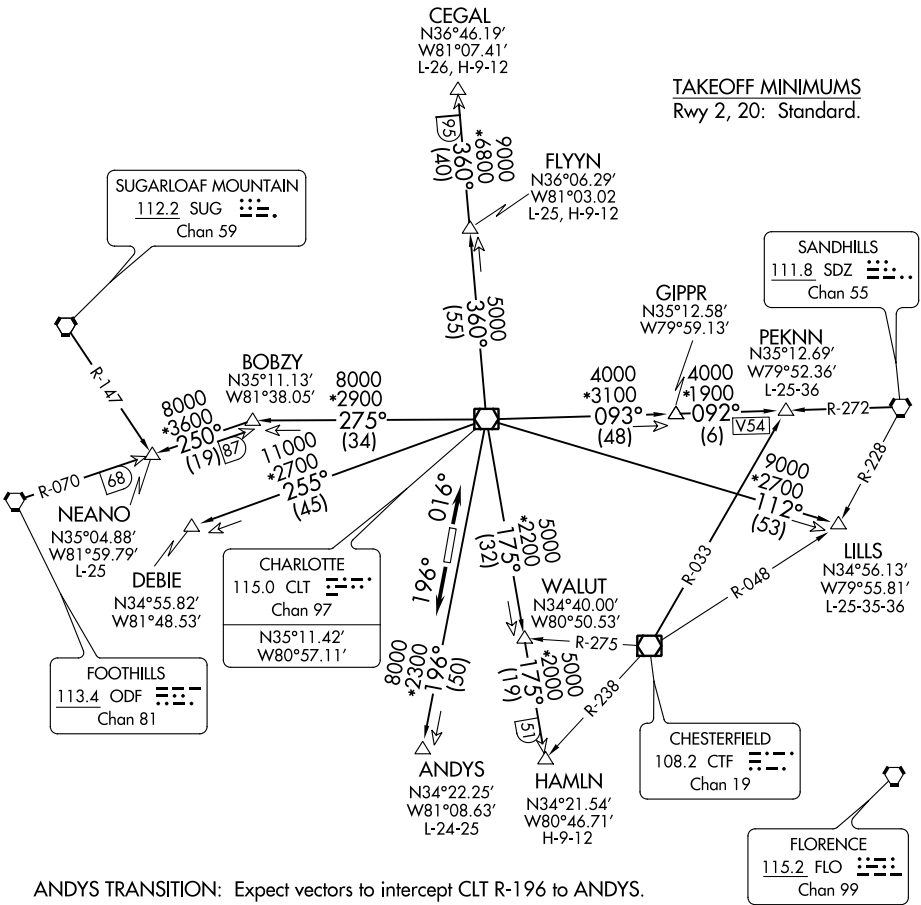
# KNIGHTS TWO DEPARTURE

ASOS  
 120.775  
 CLNC DEL  
 126.85  
 UNICOM  
 123.05  
 CHARLOTTE DEP CON  
 120.05 307.8

NOTE: For propeller aircraft only.  
 NOTE: RADAR and DME required.  
 NOTE: Turboprops: Operate in a manner that will result in best forward speed and climb rate.  
 NOTE: Transponder code will be issued via Charlotte clearance delivery.

**TOP ALTITUDE:  
 3000**

**TAKEOFF MINIMUMS**  
 Rwy 2, 20: Standard.



ANDYS TRANSITION: Expect vectors to intercept CLT R-196 to ANDYS.  
 CEGAL TRANSITION: Expect vectors to intercept CLT R-360 to CEGAL.  
 DEBIE TRANSITION: Expect vectors to intercept CLT R-255 to DEBIE.  
 FLYYN TRANSITION: Expect vectors to intercept CLT R-360 to FLYYN.  
 HAMLN TRANSITION: Expect vectors to intercept CLT R-175 to HAMLN.  
 LILLS TRANSITION: Expect vectors to intercept CLT R-112 to LILLS.  
 NEANO TRANSITION: Expect vectors to intercept CLT R-275 to BOBZY then ODF R-070 to NEANO.  
 PEKNN TRANSITION: Expect vectors to intercept CLT R-093 to GIPPR then SDZ R-272 to PEKNN.

(NARRATIVE ON FOLLOWING PAGE)

NOTE: Chart not to scale.

# KNIGHTS TWO DEPARTURE

SE-2, 09 SEP 2021 to 07 OCT 2021

SE-2, 09 SEP 2021 to 07 OCT 2021