

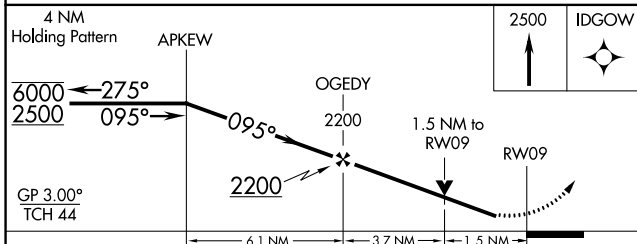
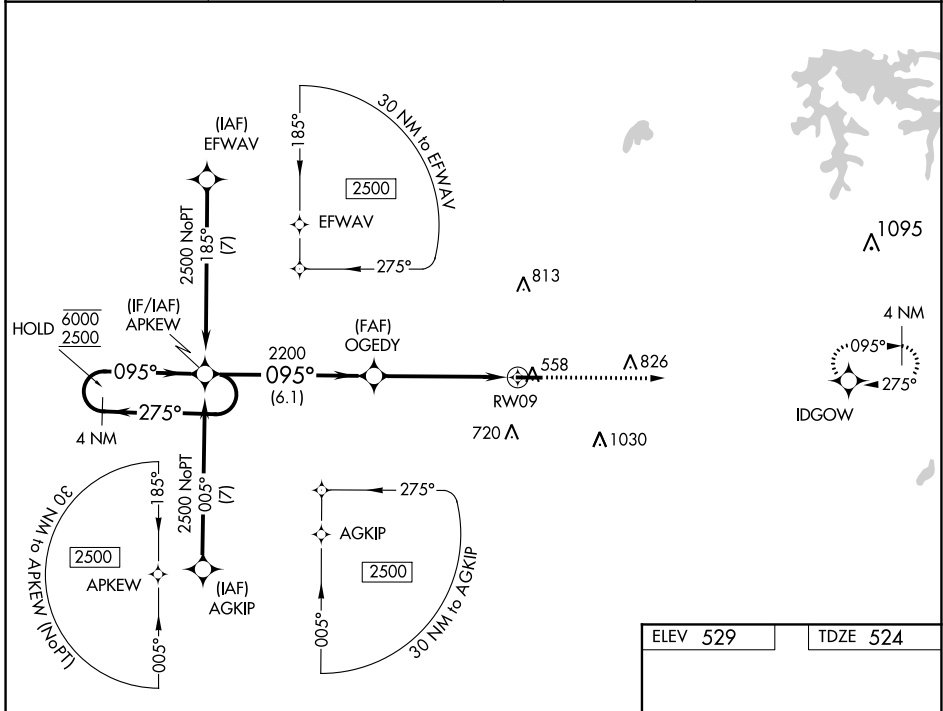
WAAS CH <b>49207</b> <b>W09A</b>	APP CRS <b>095°</b>	Rwy Idg TDZE Apt Elev	<b>5501</b> <b>524</b> <b>529</b>
--	------------------------	-----------------------------	---

# RNAV (GPS) RWY 9

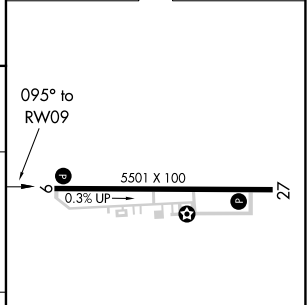
HUNTINGBURG (HNB)

RNP APCH - GPS.		MISSED APPROACH: Climb to 2500 direct IDGOW and hold.
<p>▼ Rwy 9 helicopter visibility reduction below 3/4 SM NA.</p> <p>▲ For uncompensated Baro-VNAV systems, LNAV/VNAV NA below -16°C or above 54°C.</p>		

AWOS-3PT <b>118.250</b>	EVANSVILLE APP CON ★ <b>124.025 290.9</b>	CLNC DEL <b>118.8</b>	UNICOM <b>122.8 (CTAF) 0</b>
----------------------------	--	--------------------------	---------------------------------



ELEV 529	TDZE 524
----------	----------



CATEGORY	A	B	C	D
LPV DA		774-3/4	250 (300-3/4)	
LNAV/VNAV DA		810-7/8	286 (300-7/8)	
LNAV MDA	1020-1	496 (500-1)	1020-1 3/8	496 (500-1 3/8)
CIRCLING	1020-1 491 (500-1)	1040-1 511 (600-1)	1040-1 1/2 511 (600-1 1/2)	1380-2 3/4 851 (900-2 3/4)

MIRL Rwy 9-27 0  
REIL Rwy 9 and 27 0

EC-2, 09 SEP 2021 to 07 OCT 2021

EC-2, 09 SEP 2021 to 07 OCT 2021