

LOC I-OSU 108.5	APP CRS 092°	Rwy Idg 5004
		TDZE 905
		Apt Elev 905

ILS or LOC RWY 9R

OHIO STATE UNIVERSITY (OSU)

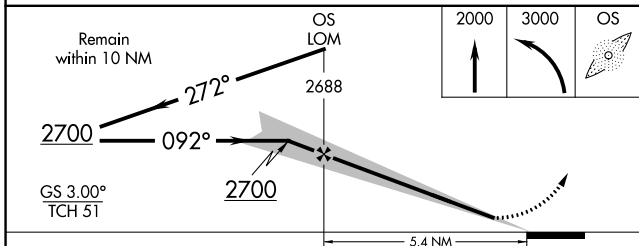
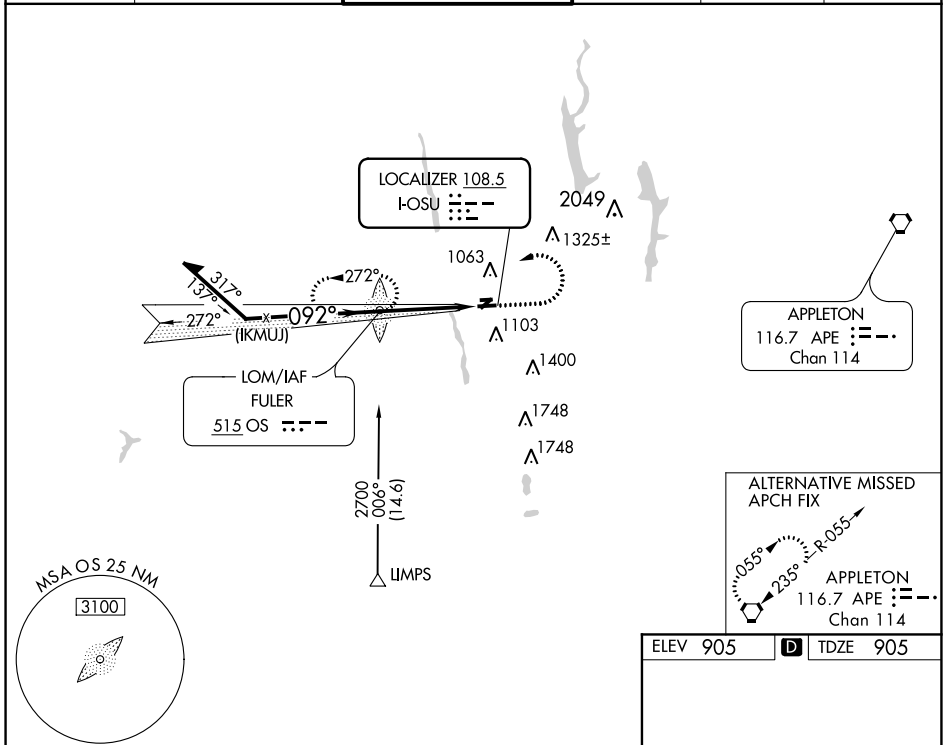
ADF required for procedure entry. ADF required.

When local altimeter setting not received, use John Glenn Columbus Intl altimeter setting; increase DA to 1140 feet; increase all MDAs 40 feet and S-9R visibility Cat C ½ SM and Cat D and Circling Cat D ¼ SM. Circling Rwy 23 NA at night.

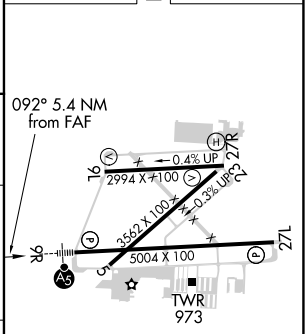
MALSRL
AS

MISSED APPROACH: Climb to 2000 then climbing left turn to 3000 direct FULER LOM and hold.

ATIS 121.35	COLUMBUS APP CON 125.95 317.775	STATE TOWER ★ 118.8 (CTAF) 254.325	GND CON 121.7	CLNC DEL 121.7	UNICOM 122.95
-----------------------	---	--	-------------------------	--------------------------	-------------------------



ELEV 905	TDZE 905
----------	----------



CATEGORY	A	B	C	D
S-ILS 9R	1105-½ 200 (200-½)			
S-LOC 9R	1420-½	515 (600-½)	1420-1	515 (600-1)
CIRCLING	1420-1	515 (600-1)	1420-1½	1680-2½
			515 (600-1½)	775 (800-2½)

FAF to MAP 5.4 NM					
Knots	60	90	120	150	180
Min:Sec	5:24	3:36	2:42	2:10	1:48

EC-2, 09 SEP 2021 to 07 OCT 2021

EC-2, 09 SEP 2021 to 07 OCT 2021