

WAAS CH <b>45720</b> <b>W27A</b>	APP CRS <b>272°</b>	Rwy Idg TDZE Apt Elev	<b>5004</b> <b>903</b> <b>905</b>
--	------------------------	-----------------------------	---

# RNAV (GPS) RWY 27L

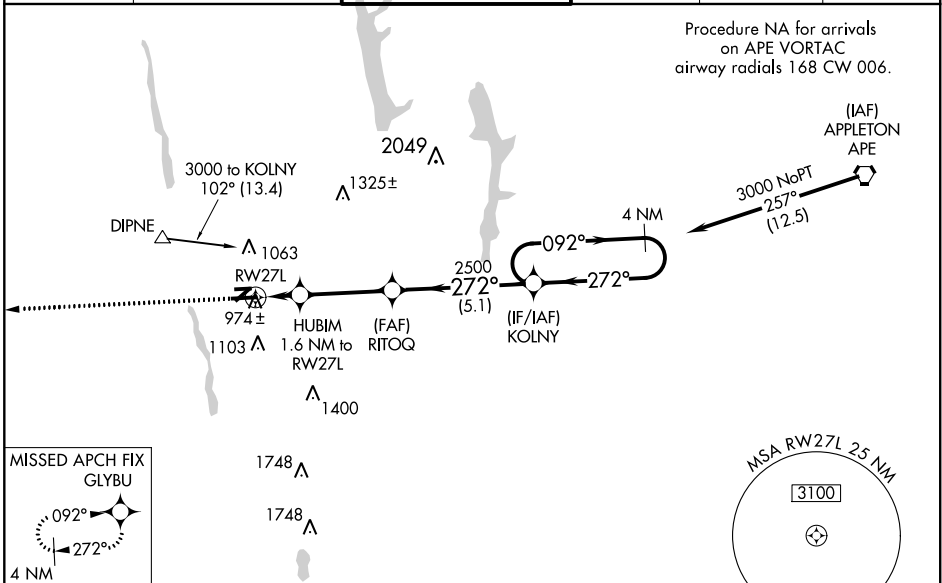
OHIO STATE UNIVERSITY (OSU)

RNP APCH.

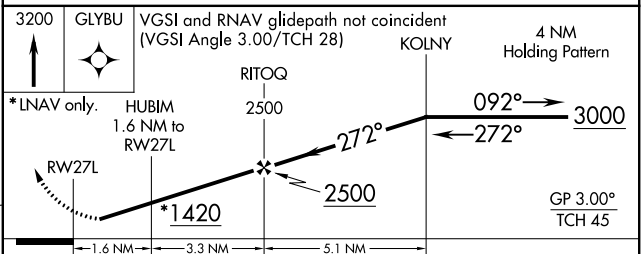
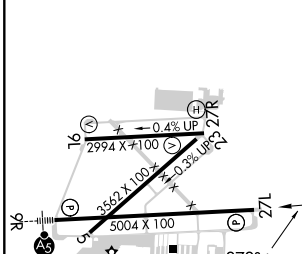
**⚠** Baro-VNAV NA when using John Glenn Columbus Intl altimeter setting. For uncompensated Baro-VNAV systems, LNAV/VNAV NA below -16°C or above 38°C. When local altimeter setting not received, use John Glenn Columbus Intl altimeter setting; increase LPV DA to 1178 feet; increase LNAV/VNAV DA to 1224 feet and all visibilities ¼ SM; increase all MDAs 40 feet and visibility LNAV Cat C ¼ SM and Cat D ¼ SM, and Circling Cat D ¼ SM. Circling Rwy 23 NA at night. Rwy 27L helicopter visibility reduction below ¼ SM NA.

MISSED APPROACH: Climb to 3200 direct GLYBU and hold.

ATIS <b>121.35</b>	COLUMBUS APP CON <b>125.95 317.775</b>	STATE TOWER * <b>118.8 (CTAF) 0 254.325</b>	GND CON <b>121.7</b>	CLNC DEL <b>121.7</b>	UNICOM <b>122.95</b>
-----------------------	---	--	-------------------------	--------------------------	-------------------------



ELEV 905	<b>D</b>	TDZE 903
----------	----------	----------



CATEGORY	A	B	C	D
LPV DA		1153-1	250 (300-1)	
LNAV/VNAV DA		1199-1	296 (300-1)	
LNAV MDA	1280-1	377 (400-1)	1280-1½	377 (400-1½)
CIRCLING	1380-1	1420-1	1420-1½	1680-2½
	475 (500-1)	515 (600-1)	515 (600-1½)	775 (800-2½)

REIL Rwy 27L  
HIRL Rwy 9R-27L  
MIRL Rwy 9L-27R

EC-2, 09 SEP 2021 to 07 OCT 2021

EC-2, 09 SEP 2021 to 07 OCT 2021