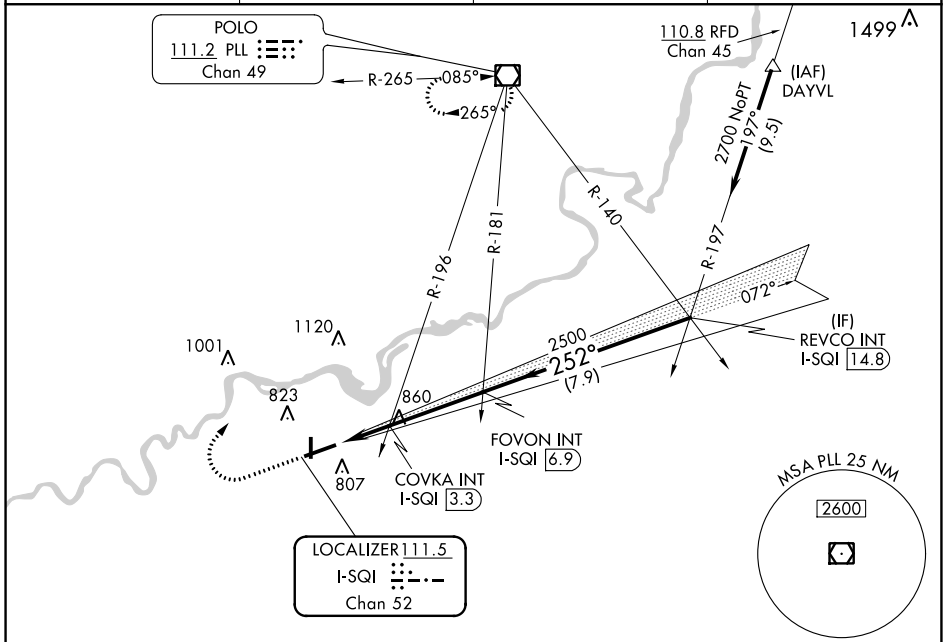


LOC/DME I-SQI <b>111.5</b> Chan 52	APP CRS <b>252°</b>	Rwy Idg 6499	TDZE 647
		Apt Elev 648	

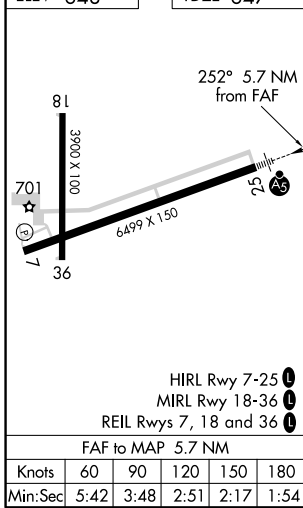
# ILS or LOC RWY 25

WHITESIDE COUNTY/JOS H BITTORF FLD (SQI)

NA Circling Rwy 36 NA at night.	MALSR	MISSED APPROACH: Climb to 2000 then climbing right turn to 2700 direct PLL VOR/DME and hold.	
AWOS-3PT <b>119.175</b>	ROCKFORD APP CON <b>126.0 327.0</b>	CLNC DEL <b>128.0</b>	UNICOM <b>123.0 (CTAF)</b>



ELEV 648	TDZE 647
----------	----------



	2000	2700	PLL	FOVON INT I-SQI 6.9	REVCO INT I-SQI 14.8
				COVKA INT I-SQI 3.3	
				I-SQI 1.2	I-SQI 2.6
				2500	2500
				1320*	2700
				1320*	2500
					GS 3.00° TCH 54
CATEGORY	A	B	C	D	
S-ILS 25	847-1/2 200 (200-1/2)				
S-LOC 25	1320-1/2 673 (700-1/2)	1320-1/2 673 (700-1/2)			
CIRCLING	1320-1 672 (700-1)	1320-2 672 (700-2)	1480-2 3/4 832 (900-2 3/4)		
COVKA FIX MINIMUMS (DUAL VOR RECEIVERS OR DME REQUIRED)					
S-LOC 25	1120-1/2 473 (500-1/2)	1120-1 473 (500-1)			
CIRCLING	1140-1 492 (500-1)	1160-1/2 512 (600-1/2)	1480-2 3/4 832 (900-2 3/4)		

EC-3, 09 SEP 2021 to 07 OCT 2021

EC-3, 09 SEP 2021 to 07 OCT 2021