

LOC/DME I-SQI 111.5 Chan 52	APP CRS 072°	Rwy ldg 6499 TDZE 648 Apt Elev 648
---	------------------------	---

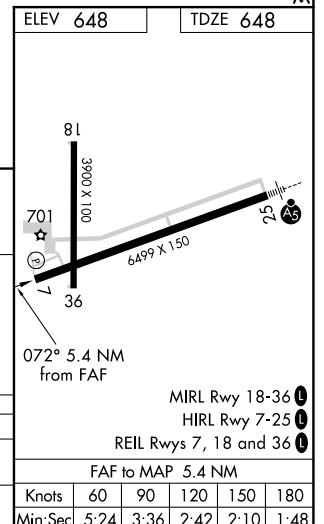
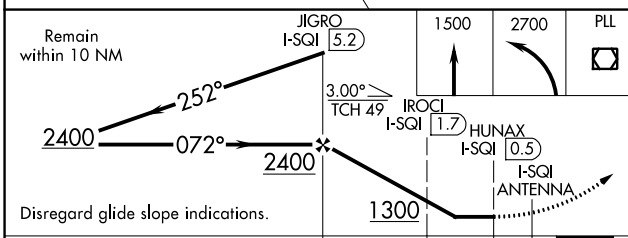
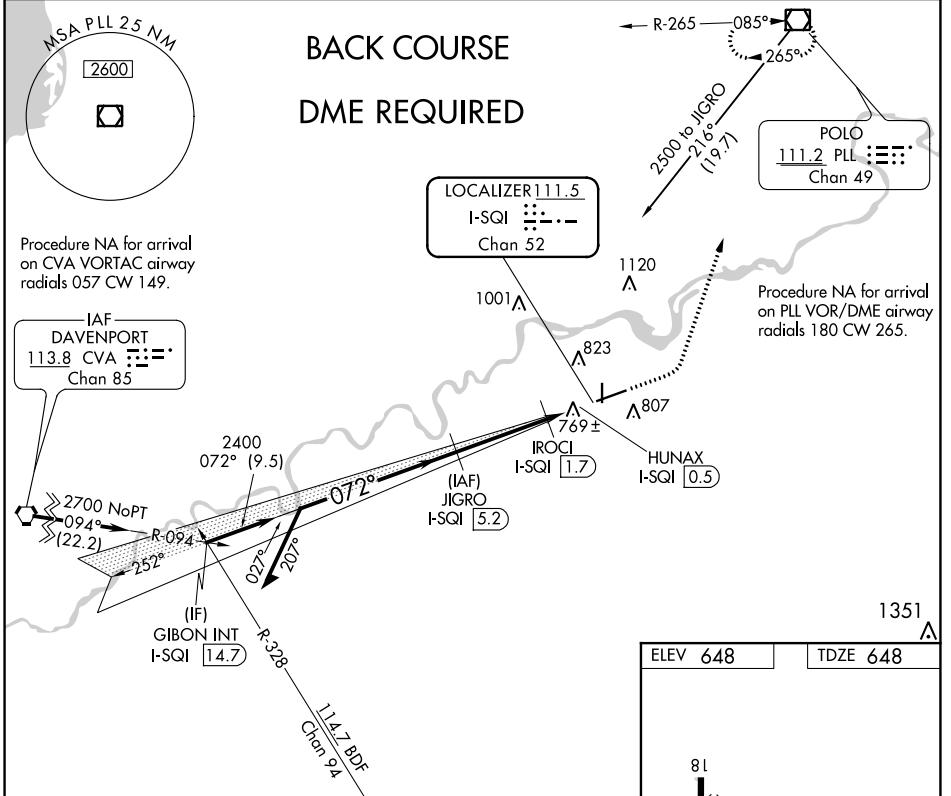
LOC BC RWY 7

WHITESIDE COUNTY/JOS H BITTORF FLD (SQI)

NA Circling Rwy 36 NA at night.
Rwy 7 helicopter visibility reduction below 3/4 SM NA.
DME required.

MISSED APPROACH: Climb to 1500 then climbing left turn to 2700 direct PLL VOR/DME and hold.

AWOS-3PT 119.175	ROCKFORD APP CON 126.0 327.0	CLNC DEL 128.0	UNICOM 123.0 (CTAF)
----------------------------	--	--------------------------	-------------------------------



CATEGORY	A	B	C	D
S-LOC 7	1020-1 372 (400-1)			
CIRCLING	1140-1 492 (500-1)	1160-1½ 512 (600-1½)	1480-2¾ 832 (900-2¾)	

EC-3, 09 SEP 2021 to 07 OCT 2021

EC-3, 09 SEP 2021 to 07 OCT 2021