

WAAS CH <b>86833</b> <b>W17A</b>	APP CRS <b>173°</b>	Rwy Idg TDZE Apt Elev	<b>5701</b> <b>2918</b> <b>2918</b>
--	------------------------	-----------------------------	---

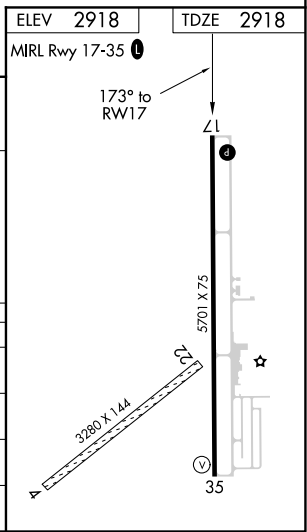
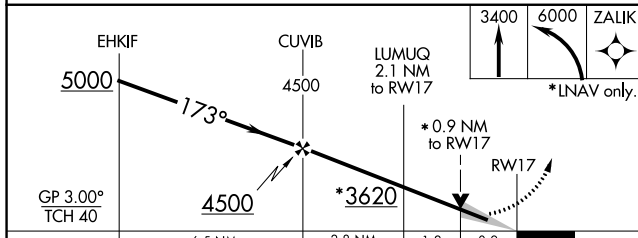
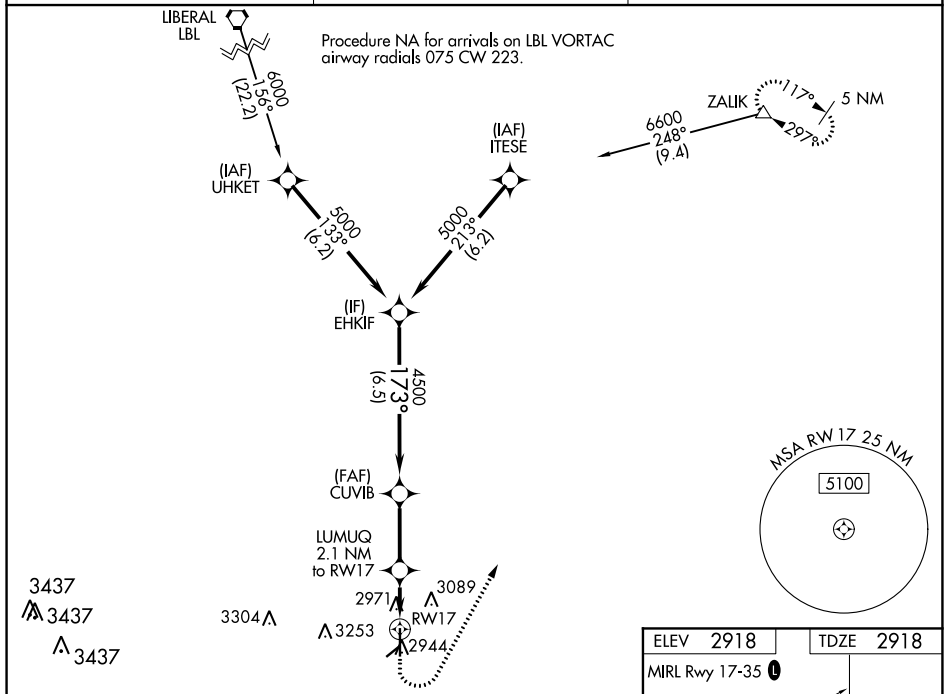
# RNAV (GPS) RWY 17

PERRYTON OCHILTREE COUNTY (PYX)

**⚠** Baro-VNAV and VDP NA when using Gage altimeter setting. For uncompensated Baro-VNAV systems, LNAV-VNAV NA below -20°C (-4°F) or above 54°C (130°F). When local altimeter setting not received, use Gage altimeter setting and increase all DAs 208 feet and MDAs 220 feet; increase LPV and LNAV/VNAV Cats A and B visibility ¾ mile and Circling Cat B visibility ¼ mile. DME/DME RNP-0.3 NA. Circling NA to Rwy's 4 and 22.

**MISSED APPROACH:** Climb to 3400 then climbing left turn to 6000 direct ZALIK and hold.

AWOS-3 <b>118.175</b>	KANSAS CITY CENTER <b>126.95 379.2</b>	UNICOM <b>122.8 (CTAF) 0</b>
--------------------------	---	---------------------------------



CATEGORY	A	B	C	D
LPV DA	3168-7/8	250 (300-7/8)		NA
LNAV/VNAV DA	3168-7/8	250 (300-7/8)		NA
LNAV MDA	3240-1	322 (400-1)		NA
<b>C</b> CIRCLING	3300-1 382 (400-1)	3580-1 662 (700-1)		NA

SC-2, 09 SEP 2021 to 07 OCT 2021

SC-2, 09 SEP 2021 to 07 OCT 2021