

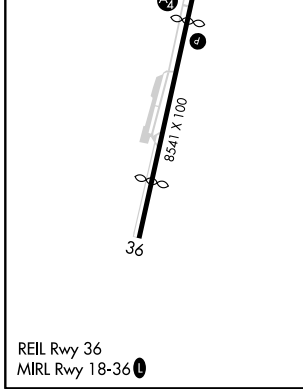
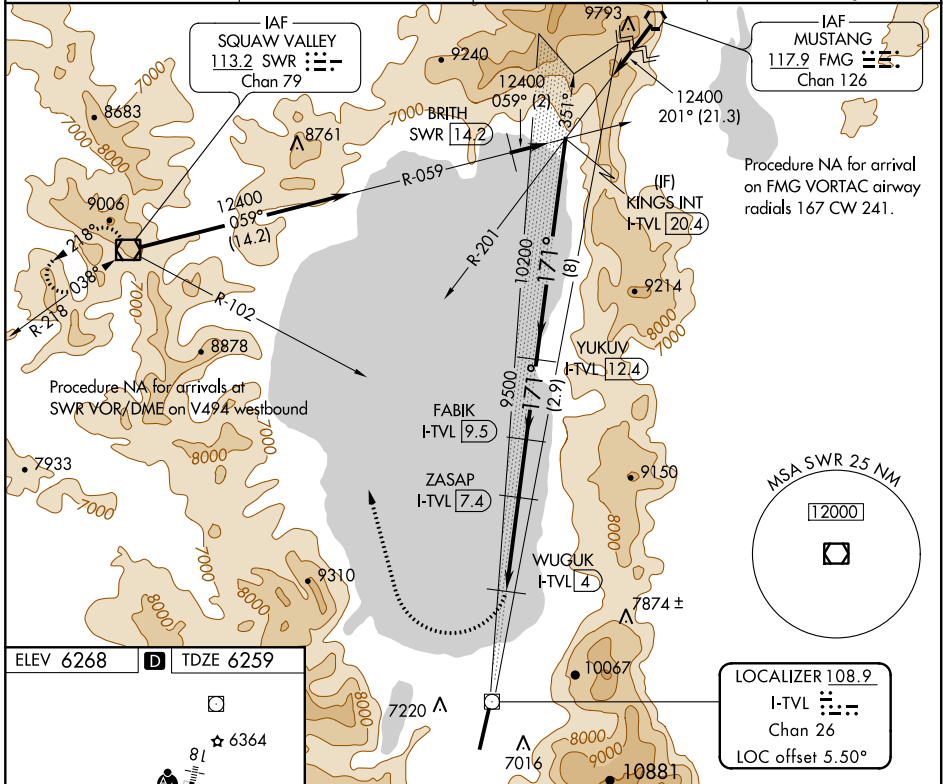
LOC/DME I-TVL 108.9 Chan 26	APP CRS 171°	Rwy Idg TDZE 6259 Apt Elev 6268
--	------------------------	---

LDA RWY 18

LAKE TAHOE (TVL)

DME required.	MALSF	MISSED APPROACH: Climbing right turn to 11000 on heading 329° and SWR VOR/DME R-102 to SWR VOR/DME and hold.
<p>NA Rwy 18 helicopter visibility reduction below 3/4 SM NA. When local altimeter setting not received, procedure NA.</p> <p>-13°C</p>		

ASOS 124.725	OAKLAND CENTER 127.95 316.1	CLNC DEL 134.3	CTAF 122.85
------------------------	---------------------------------------	--------------------------	-----------------------



ELEV 6268	TDZE 6259	11000	SWR R-102	SWR	YUKUV I-TVL 12.4	KINGS INT I-TVL 20.4
<p>REIL Rwy 36</p> <p>MIRL Rwy 18-36</p>		<p>WUGUK I-TVL 4</p> <p>ZASAP I-TVL 7.4</p> <p>FABIK I-TVL 9.5</p>		<p>10200</p> <p>9500</p> <p>8800</p>		
CATEGORY	A	B	C	D		
S-18	7160-5			901 (900-5)	8520-5 2261 (2300-5)	

SW-2, 09 SEP 2021 to 07 OCT 2021

SW-2, 09 SEP 2021 to 07 OCT 2021