

VOR/DME AEL	APP CRS	Rwy Idg	5000
109.8	342°	TDZE	1261
Chan 35		Apt Elev	1261

VOR RWY 35

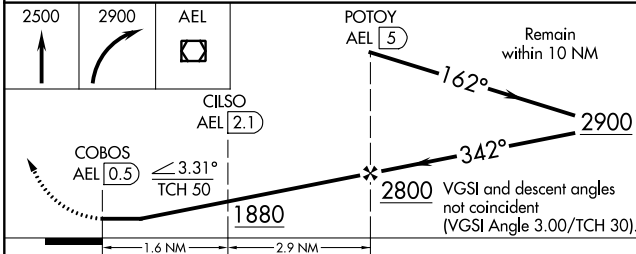
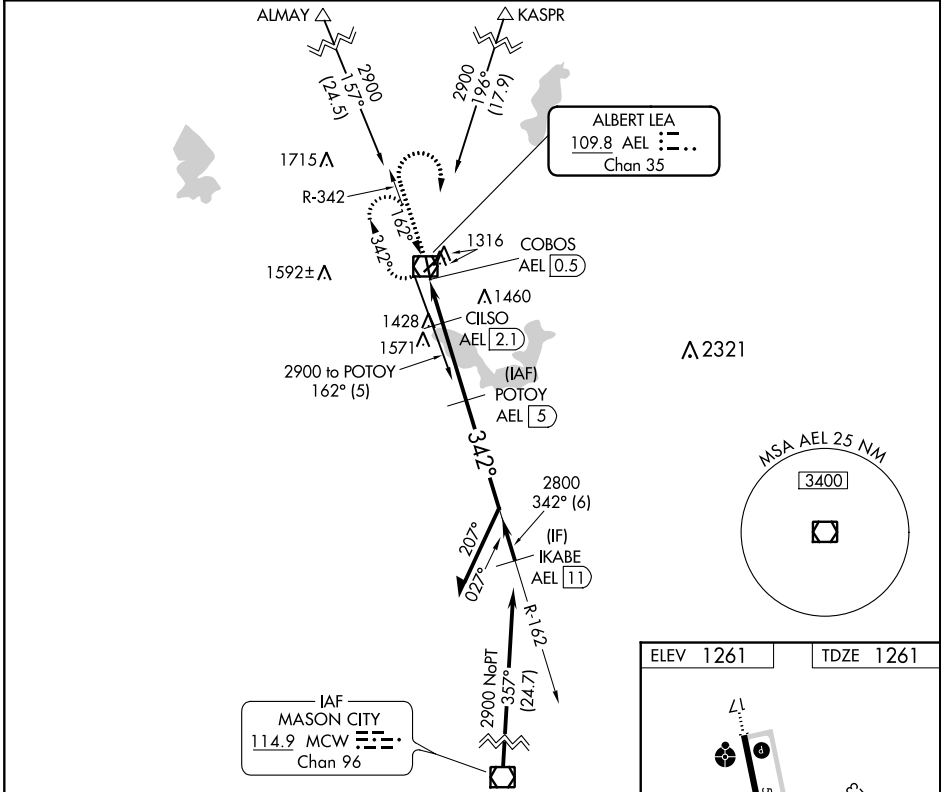
ALBERT LEA MUNI (AEL)

DME required.

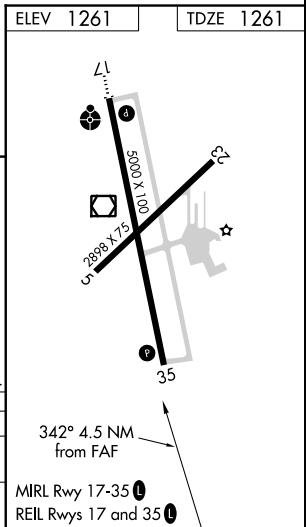
▼ Circling Rwy 5, 23 NA at night.
Rwy 35 helicopter visibility reduction below 3/4 SM NA.

MISSED APPROACH: Climb to 2500 then climbing right turn to 2900 direct AEL VOR/DME and hold.

AWOS-3 109.8	ROCHESTER APP CON * 119.8 251.125	UNICOM 123.0 (CTAF) 0
------------------------	---	---------------------------------



CATEGORY	A	B	C	D
S-35	1740-1 479 (500-1)		1740-1 3/8 479 (500-1 3/8)	
CIRCLING	1780-1 519 (600-1)		1780-1 1/2 519 (600-1 1/2)	1820-2 559 (600-2)



NC-1, 09 SEP 2021 to 07 OCT 2021

NC-1, 09 SEP 2021 to 07 OCT 2021