

LOC/DME I-LZW 110.5 Chan 42	APP CRS 110°	Rwy Idg 4099 TDZE 482 Apt Elev 482
---	------------------------	---

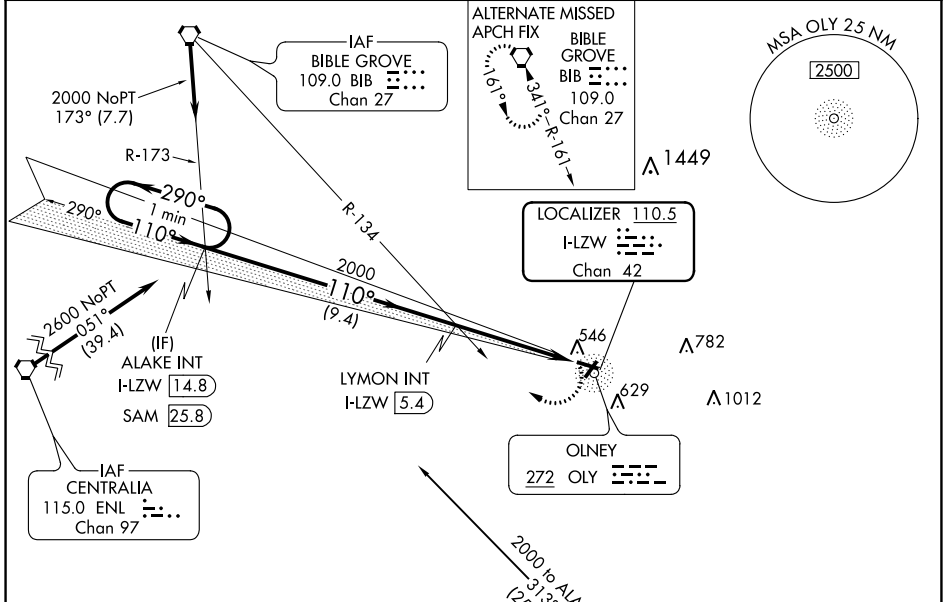
LOC RWY 11

OLNEY-NOBLE (OLY)

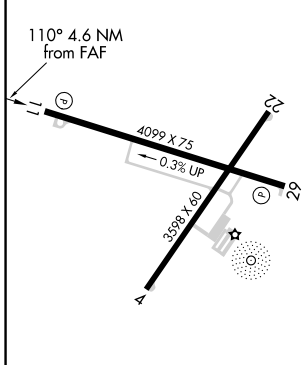
When local altimeter setting not received, use Evansville altimeter setting and increase all MDAs 140 feet, increase S-11 visibility Cat C/D 3/8 SM, Circling Cat C 1/4 SM and Cat D 1/2 SM.
VDP NA with Evansville altimeter setting.

MISSED APPROACH: Climbing right turn to 2400 on heading 290° and on SAM VOR/DME R-313 to ALAKE INT/I-LZW LOC/DME 14.8 DME and hold.

AWOS-3 119.275	KANSAS CITY CENTER 124.3 269.15	UNICOM 123.0 (CTAF)
--------------------------	---	-------------------------------

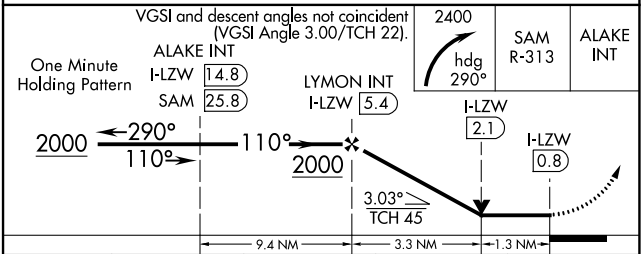
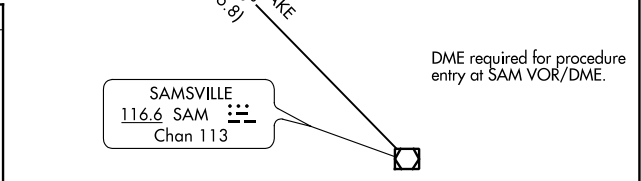


ELEV 482	TDZE 482
-----------------	-----------------



REIL Rwys 4 and 11
MIRL Rwys 4-22 and 11-29

FAF to MAP 4.6 NM					
Knots	60	90	120	150	180
Min:Sec	4:36	3:04	2:18	1:50	1:32



CATEGORY	A	B	C	D
S-11	920-1	438 (500-1)	920-1 1/4	438 (500-1 1/4)
CIRCLING	960-1	478 (500-1)	960-1 1/2	1180-2 1/4 478 (500-1 1/2) 698 (700-2 1/4)

EC-3, 09 SEP 2021 to 07 OCT 2021

EC-3, 09 SEP 2021 to 07 OCT 2021