

APP CRS	Rwy Idg	<b>3598</b>
<b>039°</b>	TDZE	<b>472</b>
	Apt Elev	<b>482</b>

# RNAV (GPS) RWY 4

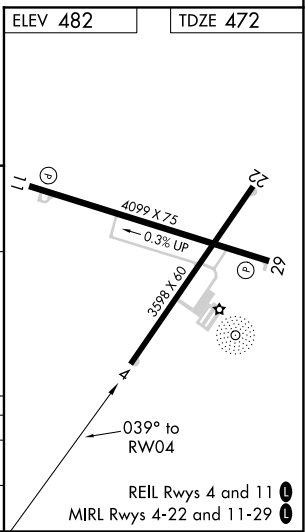
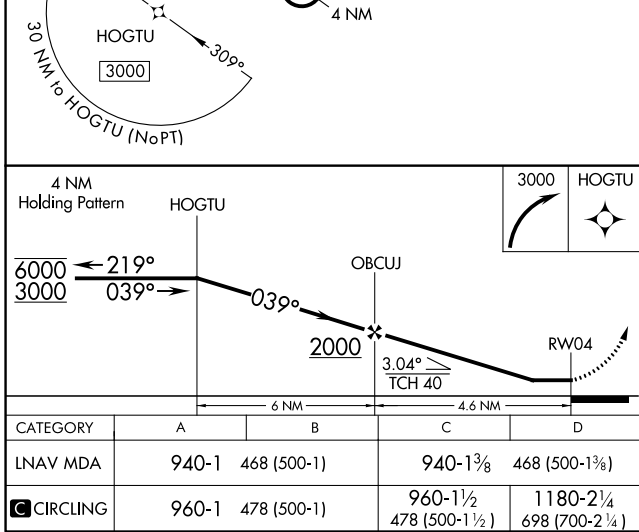
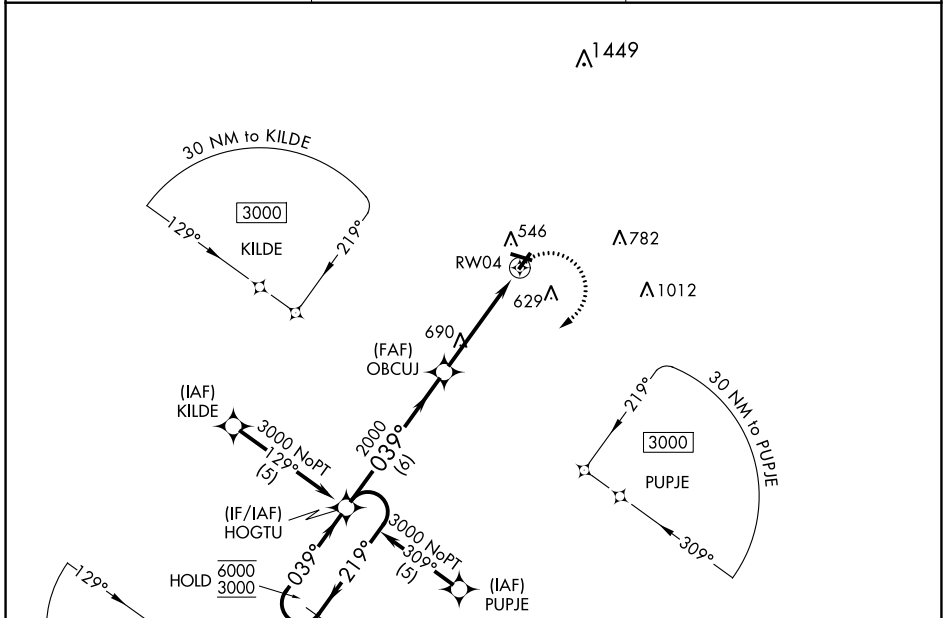
OLNEY-NOBLE (OLY)

RNP APCH.

**▼** Rwy 4 helicopter visibility reduction below 3/4 SM NA. When local altimeter setting not received, use Evansville Rgnl altimeter setting and increase all MDA 140 feet and increase LNAV Cat C/D and Circling Cat C/D visibility 1/2 mile.

**MISSED APPROACH:**  
Climbing right turn to 3000 direct HOGTU and hold.

AWOS-3 <b>119.275</b>	KANSAS CITY CENTER <b>124.3 269.15</b>	UNICOM <b>123.0 (CTAF) 0</b>
--------------------------	-------------------------------------------	---------------------------------



EC-3, 09 SEP 2021 to 07 OCT 2021

EC-3, 09 SEP 2021 to 07 OCT 2021