

WAAS CH <b>61214</b> <b>W11A</b>	APP CRS <b>110°</b>	Rwy Idg TDZE Apt Elev	<b>5101</b> <b>1730</b> <b>1730</b>
--	------------------------	-----------------------------	---

# RNAV (GPS) RWY 11

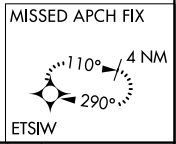
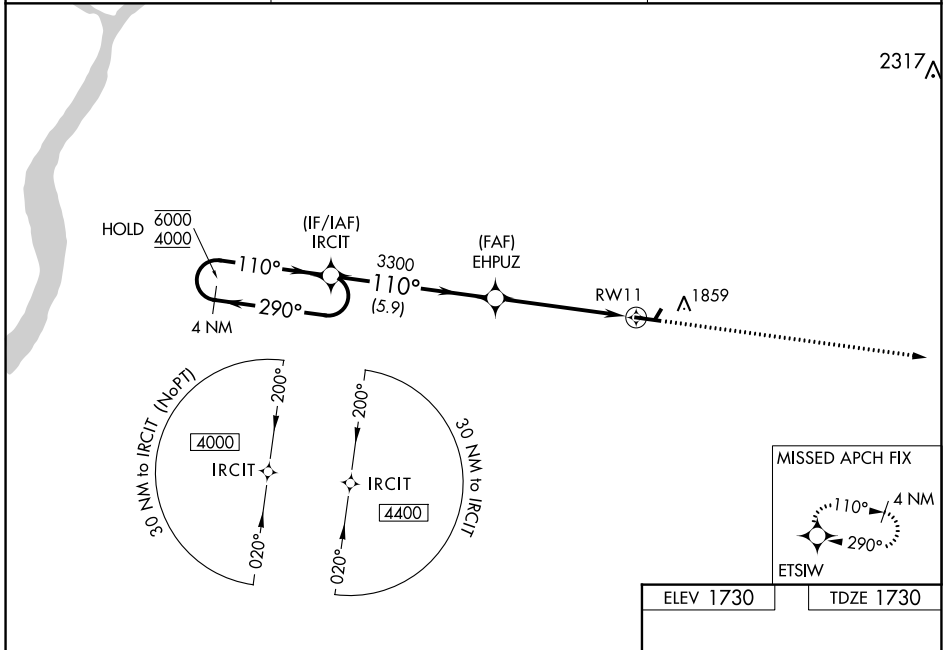
SCHUYLKILL COUNTY/JOE ZERBEY (Z.ER)

RNP APCH.

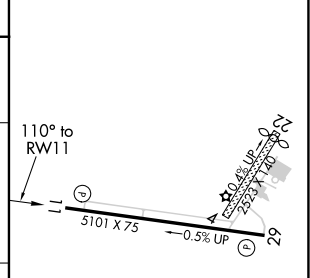
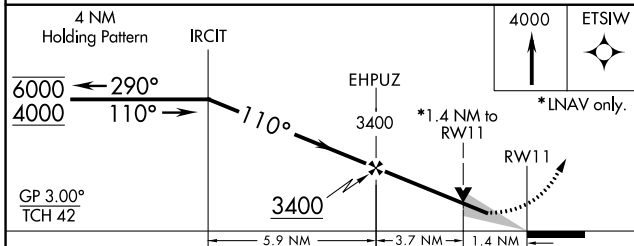
**NA** Circling NA to Rwys 4 and 22. Baro-VNAV NA when using Selinsgrove altimeter setting. For uncompensated Baro-VNAV Systems, LNAV/VNAV NA below -18°C or above 54°C. When local altimeter setting not received, use Selinsgrove altimeter setting and increase LPV DA to 2191 feet, LNAV/VNAV DA to 2281 feet and all MDAs 280 feet. Increase LPV all Cats visibility  $\frac{5}{8}$  SM, LNAV/VNAV all Cats visibility  $\frac{3}{4}$  SM, LNAV Cats C/D visibility  $\frac{3}{8}$  SM and Circling Cats C/D visibility  $\frac{3}{4}$  SM. VDP NA when using Selinsgrove altimeter setting.

MISSED APPROACH: Climb to 4000 direct ETSIW and hold.

AWOS-3 <b>127.575</b>	HARRISBURG APP CON <b>118.25 269.45</b>	UNICOM <b>123.075</b> (CTAF) <b>0</b>
--------------------------	--	--



ELEV 1730	TDZE 1730
-----------	-----------



CATEGORY	A	B	C	D
LPV DA	1930- $\frac{3}{4}$		200 (200- $\frac{3}{4}$ )	
LNAV/DA VNAV	2020- $\frac{7}{8}$		290 (300- $\frac{7}{8}$ )	
LNAV MDA	2200-1 470 (500-1)		2200-1 $\frac{3}{8}$ 470 (500-1 $\frac{3}{8}$ )	
<b>C</b> CIRCLING	2200-1 470 (500-1)		2220-1 $\frac{1}{2}$ 490 (500-1 $\frac{1}{2}$ )	

REIL Rwys 11 and 29 **0**  
MRL Rwy 11-29 **0**

NE-4, 09 SEP 2021 to 07 OCT 2021

NE-4, 09 SEP 2021 to 07 OCT 2021