

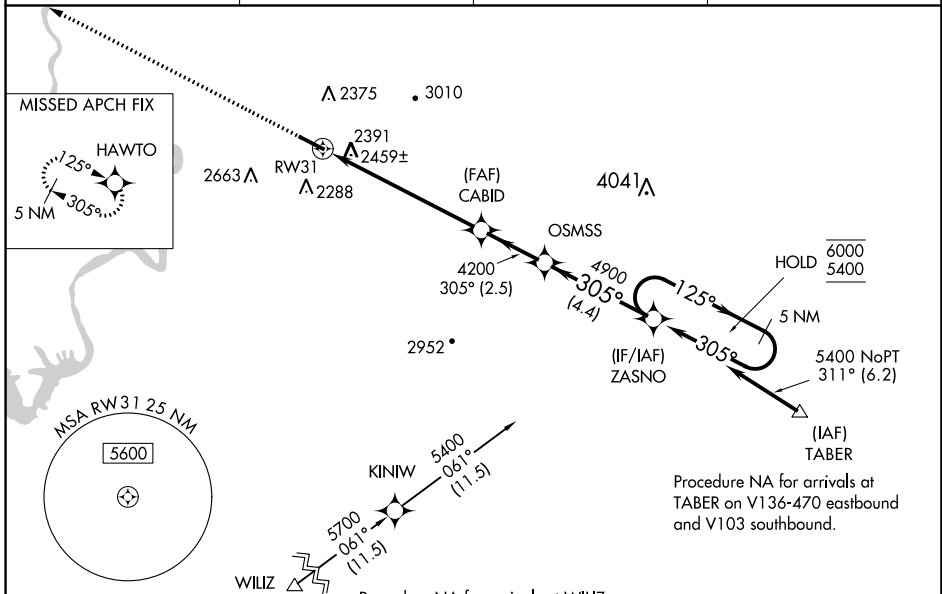
WAAS CH 86743 W31A	APP CRS 305°	Rwy Idg TDZE Apt Elev	5501 2120 2120
--	------------------------	-----------------------------	---

RNAV (GPS) RWY 31

VIRGINIA TECH/MONTGOMERY EXECUTIVE (BCB)

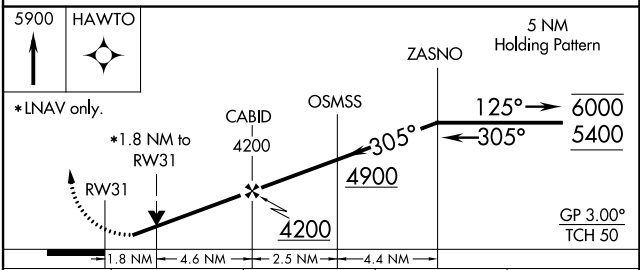
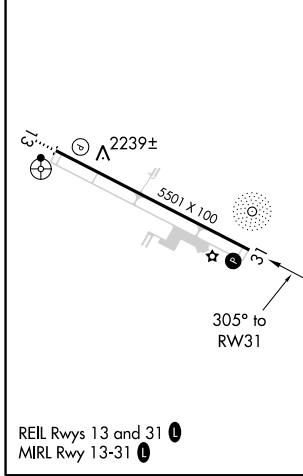
RNP APCH.	MISSED APPROACH: Climb to 5900 direct HAWTO and hold, continue climb-in-hold to 5900.
<p>▼ Rwy 31 helicopter visibility reduction below 3/4 SM NA.</p> <p>▲ For uncompensated Baro-VNAV systems, LNAV/VNAV NA below -19°C or above 54°C.</p>	

AWOS-3 133.325	ROANOKE APP CON 126.9 339.8	CLNC DEL 124.85	UNICOM 123.05 (CTAF) 0
--------------------------	---------------------------------------	---------------------------	----------------------------------



ELEV 2120	TDZE 2120
-----------	-----------

Procedure NA for arrivals at WILIZ on V45 southeast bound.



CATEGORY	A	B	C	D
LPV DA	2412-7/8	292 (300-7/8)		NA
LNAV/VNAV DA	2740-13/4	620 (700-13/4)		NA
LNAV MDA	2740-1	620 (700-1)	2740-13/4 620 (700-13/4)	NA
CIRCLING	2760-1 640 (700-1)	2820-1 700 (700-1)	2980-2 1/2 860 (900-2 1/2)	NA

NE-3, 09 SEP 2021 to 07 OCT 2021

NE-3, 09 SEP 2021 to 07 OCT 2021