

(ZETTR3.ZETTR) 19339

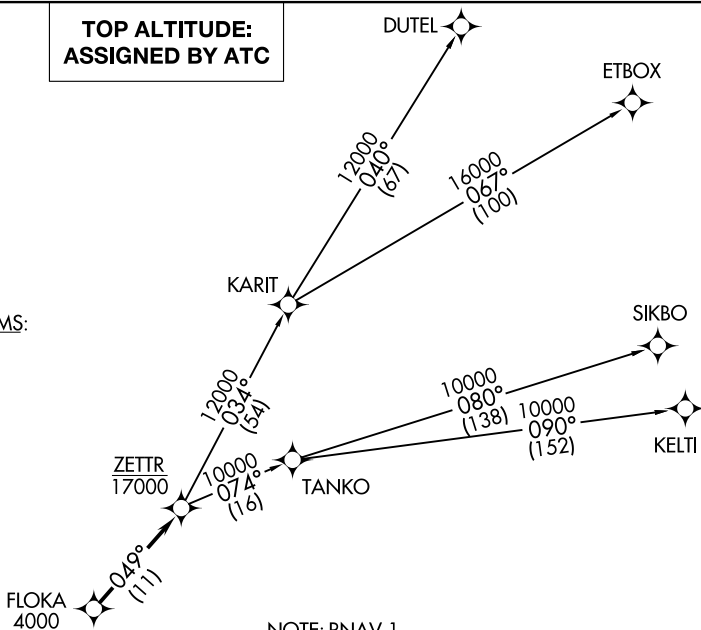
ZETTR THREE DEPARTURE (RNAV)

LIVINGSTON COUNTY SPENCER J HARDY (OZW)
AL-5485 (FAA) HOWELL, MICHIGAN

AWOS-3
118.875
CLNC DEL
121.725
CTAF
123.0
DETROIT DEP CON
132.35 284.0

**TOP ALTITUDE:
ASSIGNED BY ATC**

TAKEOFF MINIMUMS:
Standard.



- NOTE: RNAV 1.
- NOTE: RADAR required.
- NOTE: DME/DME/IRU or GPS required.
- NOTE: Turbojet departures at/above 10000, maintain 280K until advised by ATC.
- NOTE: TANKO TRANSITION: For use by CYYZ area arrivals only, or as assigned by ATC.

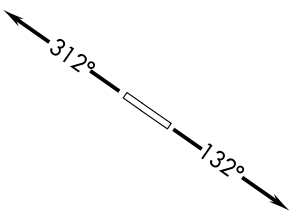
DEPARTURE ROUTE DESCRIPTION

TAKEOFF RUNWAY 13: Climb on heading 132° or as assigned for RADAR vectors to cross FLOKA at or above 4000, thence....
TAKEOFF RUNWAY 31: Climb on heading 312° or as assigned for RADAR vectors to cross FLOKA at or above 4000, thence....

....on track 049° to cross ZETTR at or below 17000, then on (transition). Maintain ATC assigned altitude, expect filed altitude 10 minutes after departure.

- DUTEL TRANSITION (ZETTR3.DUTEL):
- ETBOX TRANSITION (ZETTR3.ETBOX):
- KELTI TRANSITION (ZETTR3.KELTI):
- SIKBO TRANSITION (ZETTR3.SIKBO):
- TANKO TRANSITION (ZETTR3.TANKO):

NOTE: Chart not to scale.



ZETTR THREE DEPARTURE (RNAV)
(ZETTR3.ZETTR) 05DEC19

HOWELL, MICHIGAN
LIVINGSTON COUNTY SPENCER J HARDY (OZW)

EC-1, 09 SEP 2021 to 07 OCT 2021

EC-1, 09 SEP 2021 to 07 OCT 2021