

LOC/DME I-HUX <b>111.1</b> Chan <b>48</b>	APP CRS <b>348°</b>	Rwy Idg <b>8598</b> TDZE <b>24</b> Apt Elev <b>27</b>
---	------------------------	---

# ILS or LOC RWY 35L

SACRAMENTO INTL (SMF)

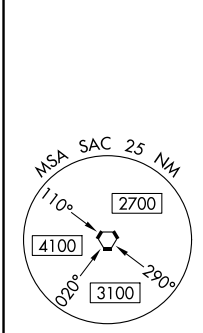
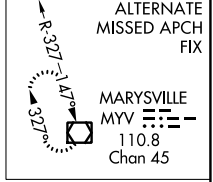
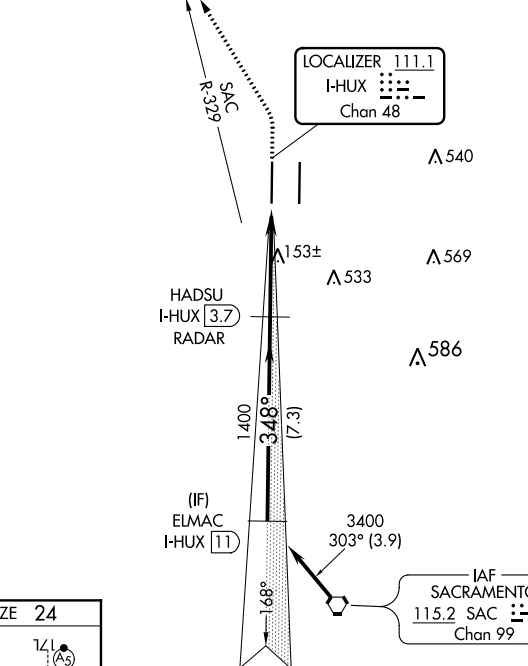
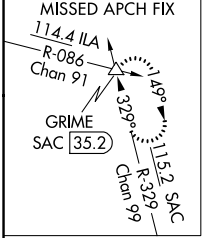
DME required for procedure entry. RADAR or DME required for LOC only.



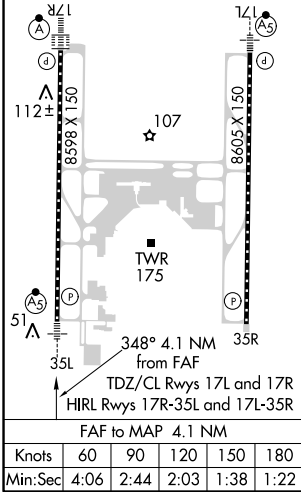
**MISSED APPROACH:** Climb to 500 then climbing left turn to 2000 on heading 320° and SAC VORTAC R-329 to GRIME INT/SAC 35.2 DME and hold.

**⚠** Circling NA east of Rwy 17R-35L. Autopilot coupled approach NA below 312 MSL. For inop ALS, increase S-LOC 35L Cats C and D visibility to RVR 6000.  
\*RVR 1800 authorized with the use of FD or AP or HUD to DA.

D-ATIS <b>126.75</b>	NORCAL APP CON <b>125.4 259.1</b> (W-NE) <b>125.25 257.9</b> (SW) <b>127.4 317.5</b> (E-SE)	<b>CAPITOL TOWER</b> <b>125.7 256.7</b>	GND CON <b>121.7 256.7</b>	CLNC DEL <b>121.1 256.7</b>	CPDLC
-------------------------	---	--	-------------------------------	--------------------------------	-------



ELEV 27	<b>D</b>	TDZE 24
---------	----------	---------



Procedure NA for arrivals on SAC VORTAC airway radials 257 CW 329.

VGS and ILS glidepath not coincident (VGS Angle 3.00/TCH 76).		500	2000	SAC R-329	GRIME
ELMAC I-HUX 11		HADSU I-HUX 3.7 RADAR		I-HUX DME ANTENNA I-HUX 0.5	
3400		348°		1400	
GS 3.00°		TCH 59		7.3 NM	
CATEGORY		A	B	C	D
S-ILS 35L*		224/24 200 (200-1/2)			
S-LOC 35L		420/24	396 (400-1/2)	420/35 396 (400-5/8)	420/40 396 (400-3/4)
<b>C</b> CIRCLING		440-1 413 (500-1)	480-1 453 (500-1)	480-1 1/2 453 (500-1 1/2)	580-2 553 (600-2)

SW-2, 09 SEP 2021 to 07 OCT 2021

SW-2, 09 SEP 2021 to 07 OCT 2021