

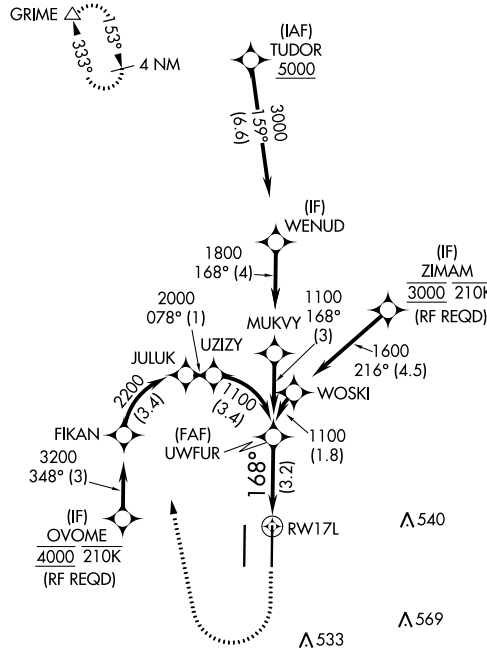
RNAV (RNP) Z RWY 17L

SACRAMENTO INTL (SMF)

APP CRS	Rwy Idg	8605
168°	TDZE	27
	Apt Elev	27

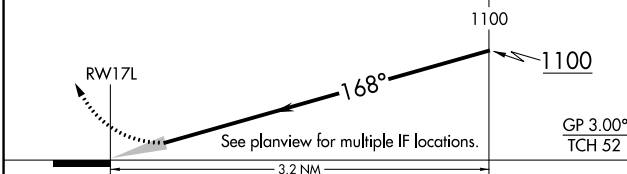
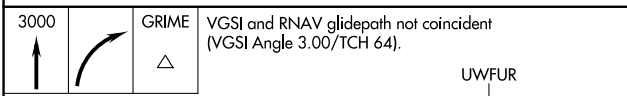
RNP AR APCH.	MALSR		MISSED APPROACH: Climb to 3000 then right turn direct GRIME and hold.
For uncompensated Baro-VNAV systems, procedure NA below -4°C or above 54°C.			

D-ATIS	NORCAL APP CON	CAPITOL TOWER	GND CON	CLNC DEL	CPDLC
126.75	125.4 259.1 (W-NE) 125.25 257.9 (SW) 127.4 317.5 (E-SE)	125.7 256.7	121.7 256.7	121.1 256.7	



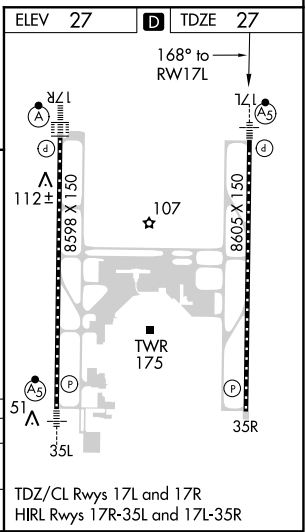
SW-2, 09 SEP 2021 to 07 OCT 2021

SW-2, 09 SEP 2021 to 07 OCT 2021



CATEGORY	A	B	C	D
RNP 0.30 DA		322-½	295 (300-½)	

AUTHORIZATION REQUIRED



TDZ/CL Rwys 17L and 17R
HIRL Rwys 17R-35L and 17L-35R