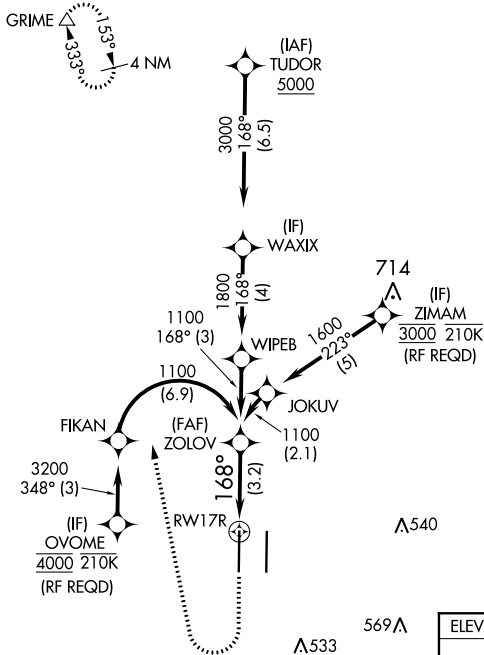


APP CRS	Rwy Idg	8598
168°	TDZE	25
	Apt Elev	27

RNAV (RNP) Z RWY 17R

SACRAMENTO INTL (SMF)

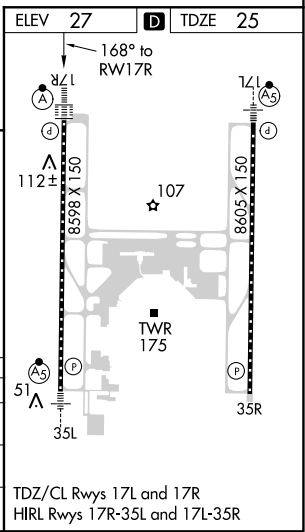
RNP AR APCH.		ALSF-2		MISSED APPROACH: Climb to 500 then climbing right turn to 2000 direct GRIME and hold.	
<p>▼ For uncompensated Baro-VNAV systems, procedure NA below -4°C or above 54°C. For inop ALS, increase RNP 0.10 all Cats visibility to RVR 4500 and RNP 0.30 all Cats visibility to RVR 6000.</p>					
D-ATIS	NORCAL APP CON	CAPITOL TOWER	GND CON	CLNC DEL	CPDLC
126.75	125.4 259.1 (W-NE) 125.25 257.9 (SW) 127.4 317.5 (E-SE)	125.7 256.7	121.7 256.7	121.1 256.7	



SW-2, 09 SEP 2021 to 07 OCT 2021

SW-2, 09 SEP 2021 to 07 OCT 2021

500	2000	GRIME	VGSI and RNAV glidepath not coincident (VGSI Angle 3.00/TCH 72).	
<p>See planview for multiple IF locations.</p>		ZOLOV	1100	
			GP 3.00° TCH 57	
CATEGORY	A	B	C	D
RNP 0.10 DA	323/24 298 (300-½)			
RNP 0.30 DA	388/40 363 (400-¾)			



AUTHORIZATION REQUIRED

TDZ/CL Rwy 17L and 17R
HIRL Rwy 17R-35L and 17L-35R