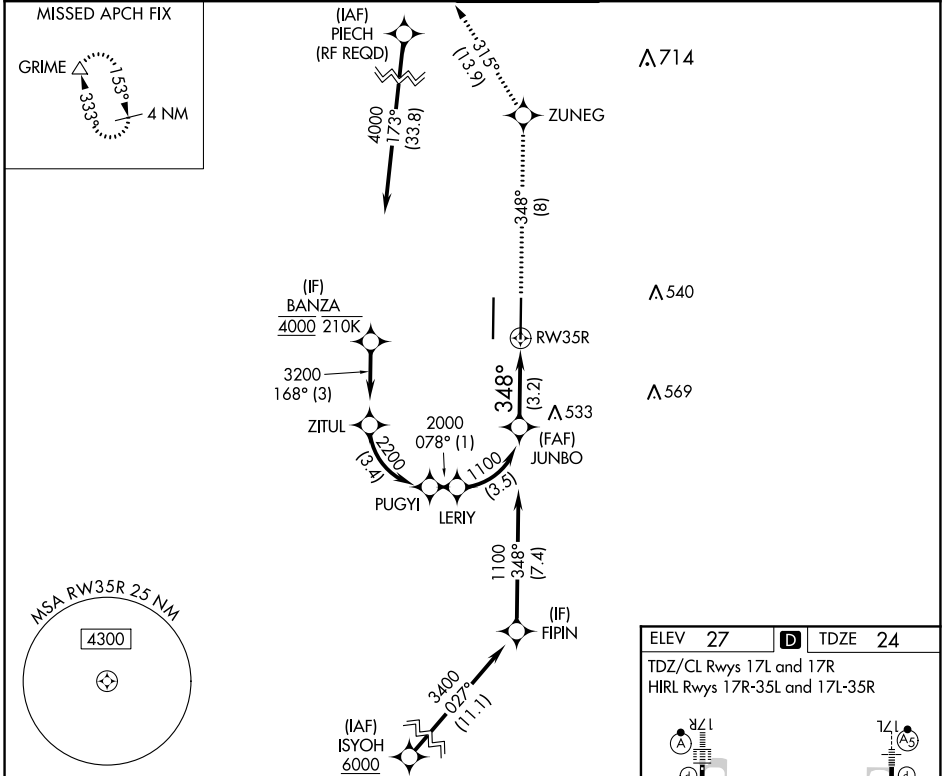


APP CRS 348°	Rwy Idg TDZE Apt Elev	8605 24 27
------------------------	-----------------------------	---------------------------------------

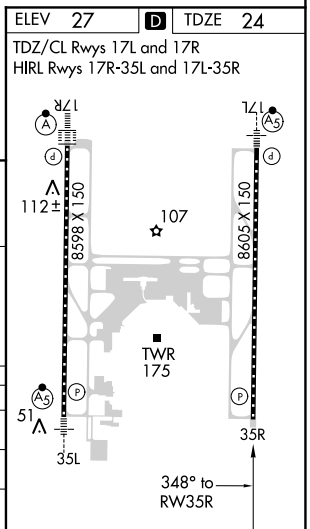
RNAV (RNP) Z RWY 35R

SACRAMENTO INTL (SMF)

RNP AR APCH.		MISSED APPROACH: Climb to 2000 on track 348° to ZUNEG and on track 315° to GRIME and hold.			
▼ For uncompensated Baro-VNAV systems, procedure NA below -4°C or above 54°C.					
D-ATIS 126.75	NORCAL APP CON 125.4 259.1 (W-NE) 125.25 257.9 (SW) 127.4 317.5 (E-SE)	CAPITOL TOWER 125.7 256.7	GND CON 121.7 256.7	CLNC DEL 121.1 256.7	CPDLC



JUNBO	2000	ZUNEG	tr 315°	GRIME
1100	↑ tr 348°			△
GP 3.00° TCH 64	See planview for multiple IF locations.			
← 3.2 NM →				
CATEGORY	A	B	C	D
RNP 0.10 DA		319-7/8	295 (300-7/8)	
RNP 0.30 DA		385-1 1/8	361 (400-1 1/8)	



AUTHORIZATION REQUIRED

SW-2, 09 SEP 2021 to 07 OCT 2021

SW-2, 09 SEP 2021 to 07 OCT 2021