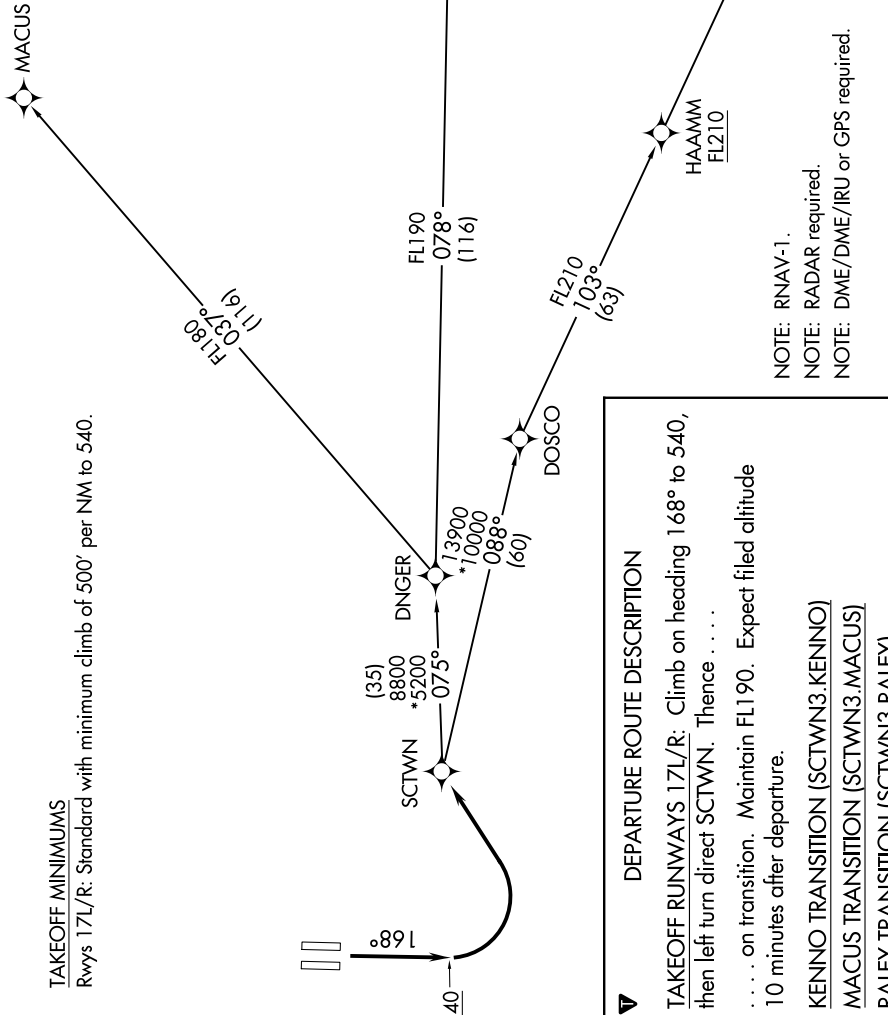


SW-2, 09 SEP 2021 to 07 OCT 2021

TAKEOFF MINIMUMS

Rwys 17L/R: Standard with minimum climb of 500' per NM to 540.

- D-ATIS 126.75
- CNCL DEL 121.1 256.7
- CPDLC 121.7 256.7
- GND CON 125.7 256.7
- CAPITOL TOWER 127.4 317.5
- NORCAL DEP CON 127.4 317.5



DEPARTURE ROUTE DESCRIPTION

- TAKEOFF RUNWAYS 17L/R: Climb on heading 168° to 540, then left turn direct SCTWN. Thence
- on transition. Maintain FL190. Expect filed altitude 10 minutes after departure.
- KENNO TRANSITION (SCTWN3.KENNO)
- MACUS TRANSITION (SCTWN3.MACUS)
- RALEY TRANSITION (SCTWN3.RALEY)

- NOTE: RNAV-1.
- NOTE: RADAR required.
- NOTE: DME/DME/IRU or GPS required.
- NOTE: Chart not to scale.

SW-2, 09 SEP 2021 to 07 OCT 2021