

SLMMR FOUR ARRIVAL (RNAV)

AL-5490 (FAA)

SACRAMENTO INTL (SMF)
SACRAMENTO, CALIFORNIA

SW-2, 09 SEP 2021 to 07 OCT 2021

NOTE: RADAR required.

NOTE: RNAV 1.

NOTE: DME/DME/IRU or GPS required.

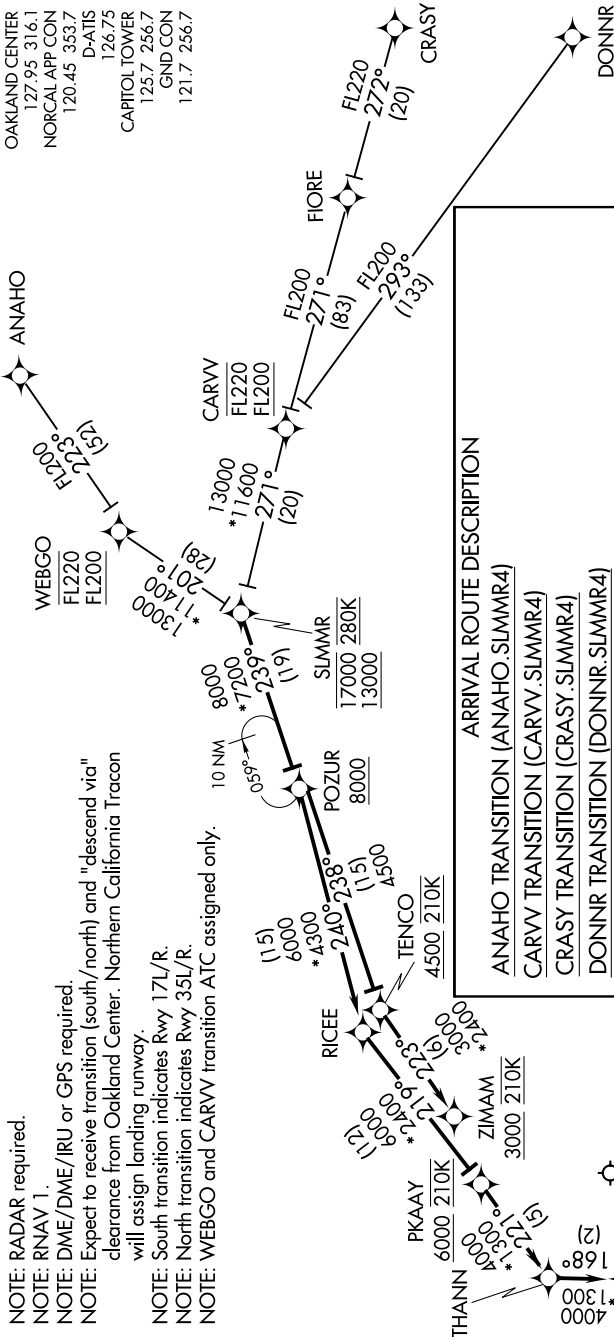
NOTE: Expect to receive transition (south/north) and "descend via" clearance from Oakland Center. Northern California Tracon will assign landing runway.

NOTE: South transition indicates Rwy 17L/R.

NOTE: North transition indicates Rwy 35L/R.

NOTE: WEBGO and CARVV transition ATC assigned only.

OAKLAND CENTER
127.95 316.1
NORCAL APP CON
120.45 353.7
D-ATIS
126.75
CAPITOL TOWER
125.7 256.7
GND CON
121.7 256.7



ARRIVAL ROUTE DESCRIPTION

ANAHO TRANSITION (ANAHO.SLMMR4)
 CARVV TRANSITION (CARVV.SLMMR4)
 CRASY TRANSITION (CRASY.SLMMR4)
 DONNR TRANSITION (DONNR.SLMMR4)
 WEBGO TRANSITION (WEBGO.SLMMR4)

From SLMMR on track 239° to cross POZUR at or above 8000.

SOUTH TRANSITION RUNWAYS 17L/R: From POZUR on track 238° to cross TENCO at or above 4500 and at 210K, then on track 223° to cross ZIMAM at or above 3000 and at 210K. Expect assigned instrument approach procedure.

NORTH TRANSITION RUNWAYS 35L/R: From POZUR on track 240° to RICEE, then on track 219° to cross PKAAAY at or above 6000 and at 210K, then on track 221° to THANN, then on track 168° to cross BANZA at 4000 and at 210K, then on track 168° to ZITUL, then on track 168° . Expect RADAR vectors to final approach course.

NOTE: Chart not to scale.

SLMMR FOUR ARRIVAL (RNAV)

(SLMMR.SLMMR4) 21MAY20

SACRAMENTO, CALIFORNIA
SACRAMENTO INTL (SMF)

SW-2, 09 SEP 2021 to 07 OCT 2021