

WAAS CH <b>62824</b> <b>W28A</b>	APP CRS <b>282°</b>	Rwy Idg TDZE <b>969</b> Apt Elev <b>974</b>	<b>5060</b>
--	------------------------	---	-------------

# RNAV (GPS) RWY 28

POLK COUNTY/CORNELIUS MOORE FLD (4A4)

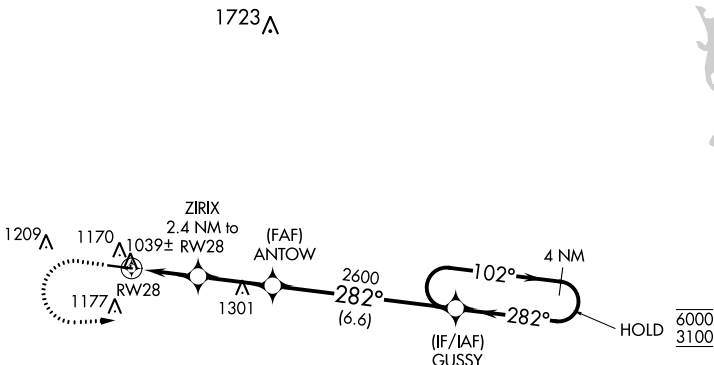
RNP APCH.

**NA** Baro-VNAV and VDP NA when using Cartersville altimeter setting. Rwy 28 helicopter visibility reduction below  $\frac{3}{4}$  SM NA. For uncompensated Baro-VNAV systems, LNAV/VNAV NA below -8°C or above 54°C. Obtain local altimeter setting on CTAF, when not received, use Cartersville altimeter setting: increase LPV DA to 1287 feet; increase LNAV/VNAV DA to 1353 feet and all visibility  $\frac{1}{8}$  SM; increase all MDAs 80 feet and visibility Cats C and D  $\frac{1}{8}$  SM.

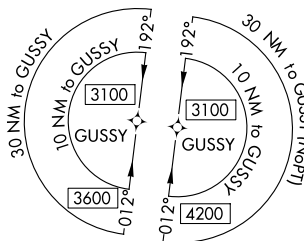
**MISSED APPROACH:**  
Climb to 1500 then climbing left turn to 3100 direct GUSSY and hold.

ATLANTA CENTER  
**124.5 270.325**

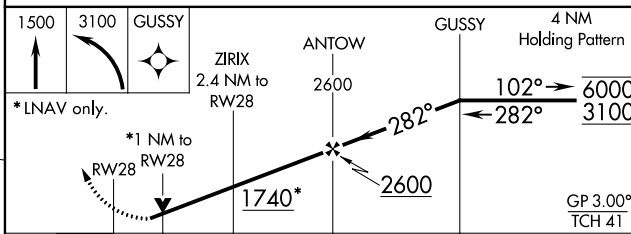
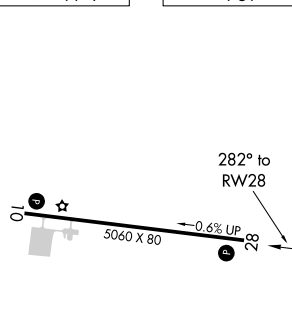
UNICOM  
**122.8 (CTAF)**



$\Delta$  1660



ELEV 974 TDZE 969



1 NM	1.4 NM	2.7 NM	6.6 NM	
CATEGORY	A	B	C	D
LPV DA		1219-1	250 (300-1)	
LNAV/VNAV DA		1285-1	316 (400-1)	
LNAV MDA		1300-1	331 (400-1)	

MIRL Rwy 10-28

SE-4, 09 SEP 2021 to 07 OCT 2021

SE-4, 09 SEP 2021 to 07 OCT 2021