

WAAS CH 99313 W19A	APP CRS 190°	Rwy ldg TDZE Apt Elev	6604 91 91
--	------------------------	-----------------------------	---------------------------------------

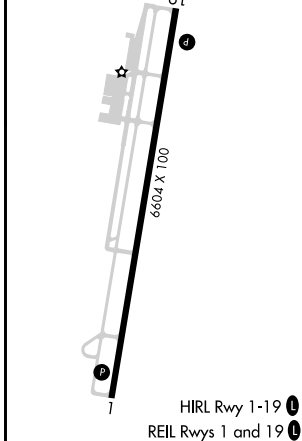
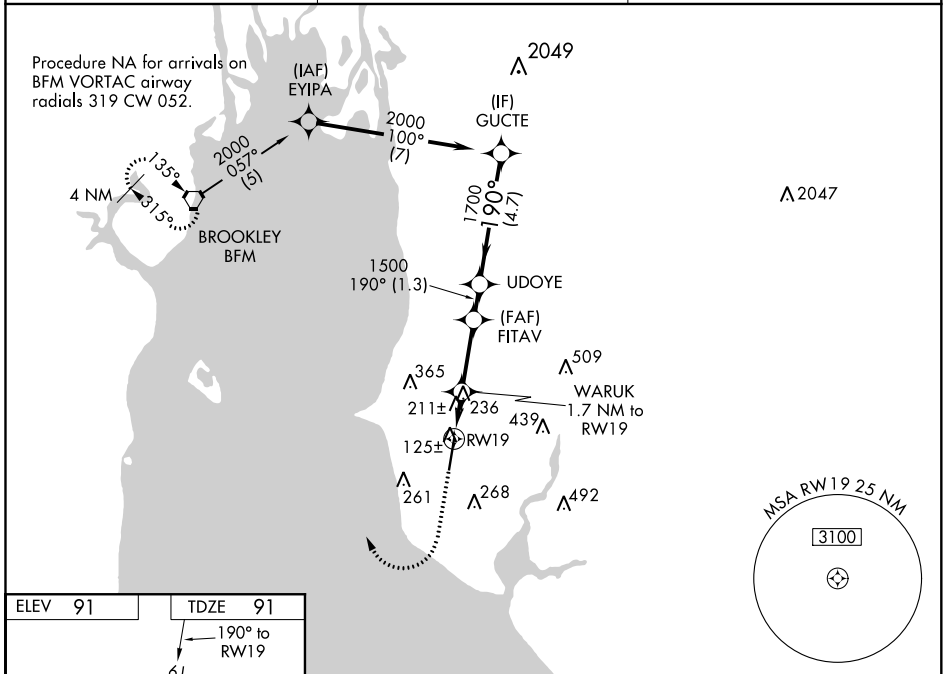
RNAV (GPS) RWY 19

H L SONNY CALLAHAN (CQF)

⚠ Baro-VNAV NA when using Mobile Downtown altimeter setting. For uncompensated Baro-VNAV systems, LNAV/VNAV NA below -15°C (5°F) or above 43°C (109°F).
⚠ DME/DME RNP-0.3 NA. VDP NA with Mobile Downtown altimeter setting. When local altimeter setting not received, use Mobile Downtown altimeter setting and increase LPV DA to 383 feet, LNAV/VNAV DA to 555 feet and all MDA 60 feet; increase LNAV and Circling Cats C/D visibility ¼ SM.

MISSED APPROACH: Climb to 1500 then climbing right turn to 2000 direct BFM Vortac and hold.

AWOS-3PT 118.425	MOBILE APP CON ★ 118.5 269.3	UNICOM 123.0 (CTAF) 0
----------------------------	--	---------------------------------



ELEV 91	TDZE 91				
1500	2000	BFM	GUCTE		
↑	↷	⬡	2000		
*LNAV only.		WARUK 1.7 NM to RW19	FITAV 1500	UDOYE	Procedure Turn NA
↙		*1.2 NM to RW19	*660	1500	GP 3.00° TCH 35
↘		1.2	0.5	2.6	1.3
		4.7			
CATEGORY	A	B	C	D	
LPV DA	341-7/8		250 (300-7/8)		
LNAV/VNAV DA	513-1½		422 (500-1½)		
LNAV MDA	500-1	409 (500-1)	500-1½	409 (500-1½)	
CIRCLING	560-1 469 (500-1)	580-1 489 (500-1)	720-1¾ 629 (700-1¾)	740-2 649 (700-2)	

SE-4, 09 SEP 2021 to 07 OCT 2021

SE-4, 09 SEP 2021 to 07 OCT 2021