

APP CRS <b>011°</b>	Rwy Idg <b>3496</b> TDZE <b>49</b> Apt Elev <b>49</b>
------------------------	---

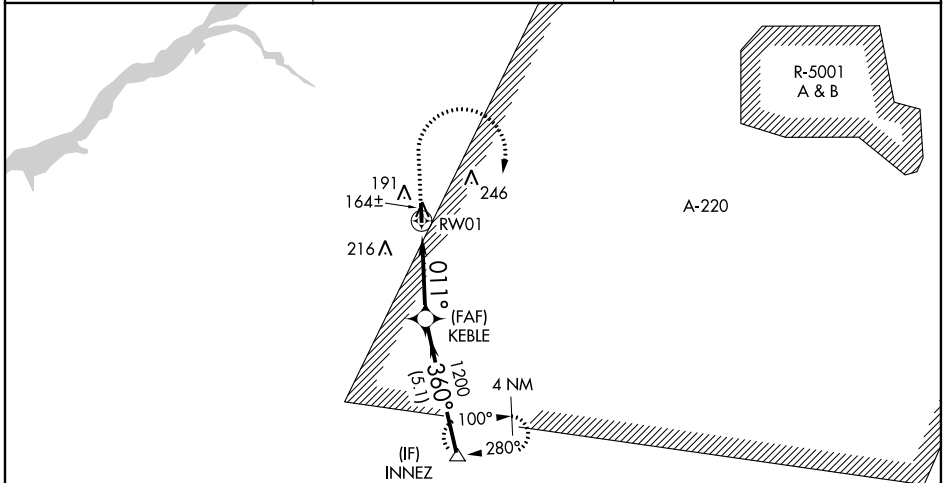
# RNAV (GPS) RWY 1

FLYING W (N14)

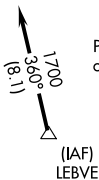
**▽** Use Mount Holly altimeter setting; when not received, use Northeast Philadelphia altimeter setting and increase all MDA 40 feet. DME/DME RNP-0.3 NA. Straight-in Rwy 1 NA at night, Circling Rwy 1 NA at night. Rwy 1 helicopter visibility reduction below 1 SM NA.

**MISSED APPROACH:** Climb to 500 then climbing right turn to 2000 direct INNEZ and hold.

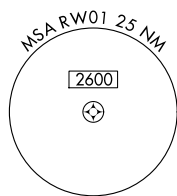
VAY ASOS <b>119.325</b>	MC GUIRE APP CON <b>126.475 363.8</b>	UNICOM <b>122.8 (CTAF)</b>
----------------------------	--	-------------------------------



1049 **△**



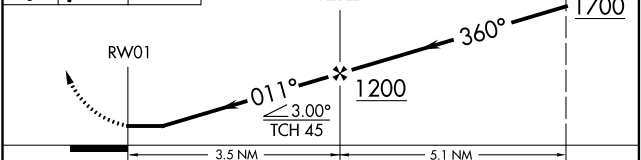
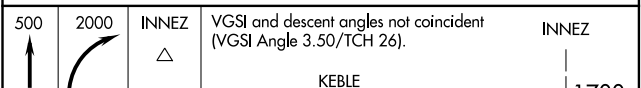
Procedure NA for arrivals on V16 southwest bound.



ELEV <b>49</b>	TDZE <b>49</b>
----------------	----------------

MIRL Rwy 1-19 **①**  
REL Rws 1 and 19 **②**

011° to RW01



CATEGORY	A	B	C	D
LNNAV MDA	420-1	371 (400-1)		NA
CIRCLING	520-1	471 (500-1)		NA

NE-2, 09 SEP 2021 to 07 OCT 2021

NE-2, 09 SEP 2021 to 07 OCT 2021