

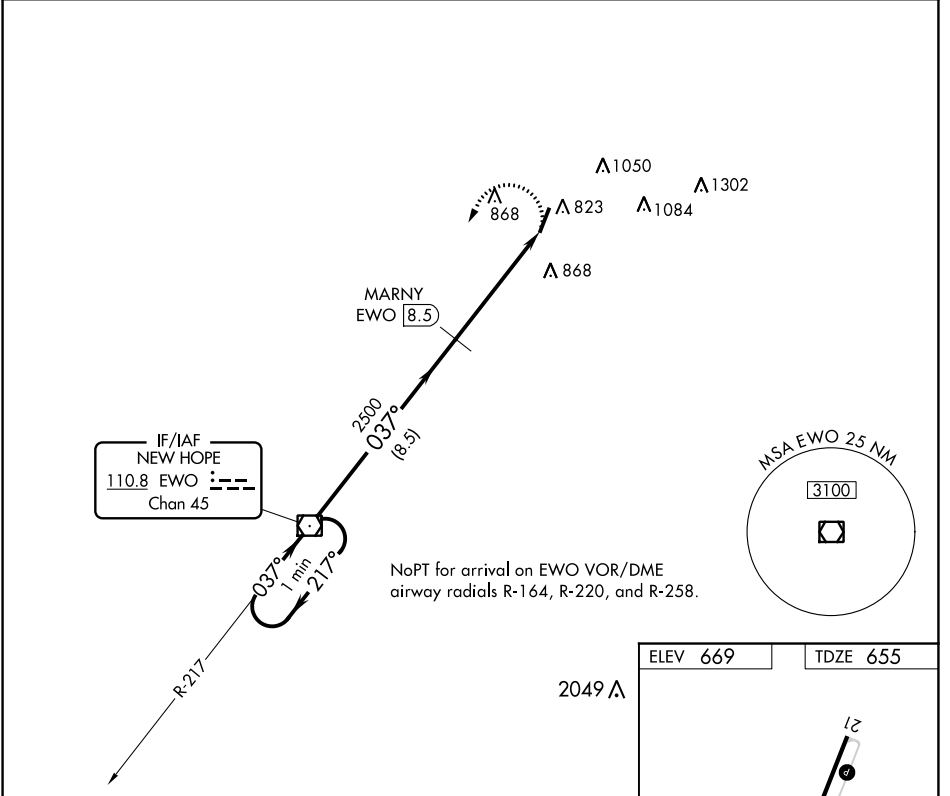
VOR/DME EWO 110.8 Chan 45	APP CRS 037°	Rwy Idg TDZE Apt Elev	5003 655 669
--	------------------------	-----------------------------	---

VOR RWY 3
SAMUELS FLD (BRY)

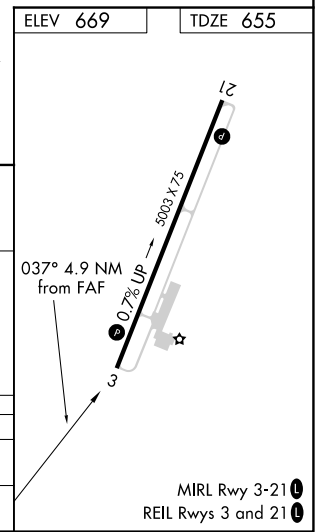
Straight-in and Circling minimums NA at night.
 Rwy 3 helicopter visibility reduction below 1 SM NA.
 DME required.

MISSED APPROACH: Climbing left turn to 2500 direct EWO VOR/DME and hold.

AWOS-3 119.925	LOUISVILLE APP CON 132.075 327.0	UNICOM 122.8 (CTAF) 0
--------------------------	--	---------------------------------



One Minute Holding Pattern	EWO VOR/DME		MARNY EWO 8.5		2500 EWO
	← 217°	→ 037°	→ 037°	→ 2500	↘ 3.50° TCH 41
		8.5 NM		4.9 NM	
CATEGORY	A	B	C	D	
S-3	1200-1	545 (600-1)	1200-1½	545 (600-1½)	
CIRCLING	1200-1 531 (600-1)	1260-1 591 (600-1)	1360-2 691 (700-2)	1480-2¾ 811 (900-2¾)	



SE-1, 09 SEP 2021 to 07 OCT 2021

SE-1, 09 SEP 2021 to 07 OCT 2021