

VOR/DME CTF <b>108.2</b> Chan <b>19</b>	APP CRS <b>080°</b>	Rwy Idg <b>5000</b> TDZE <b>239</b> Apt Elev <b>239</b>
---	------------------------	---

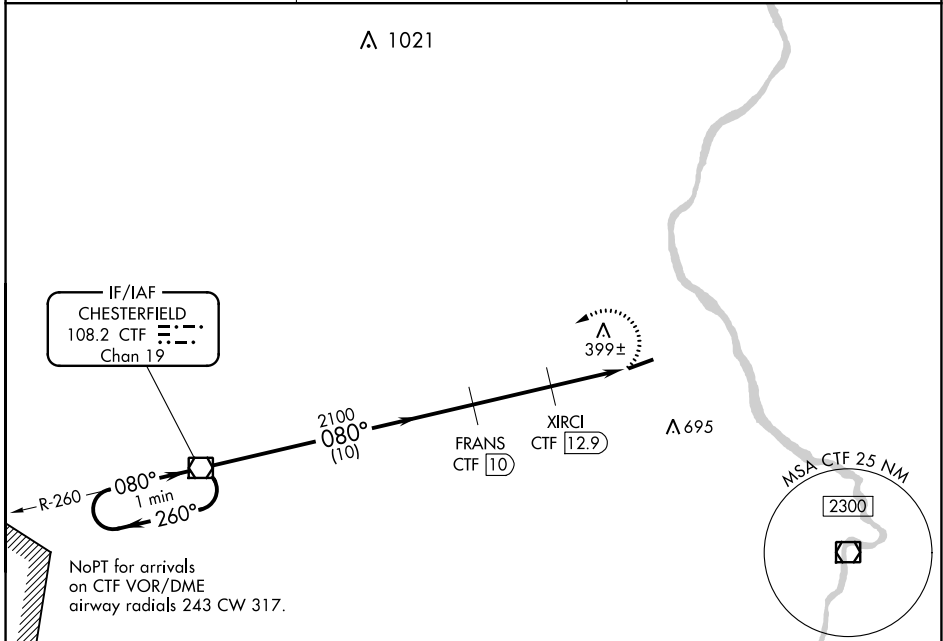
# VOR/DME RWY 8

CHERAW MUNI/LYNCH BELLINGER FIELD (CQW)

**⚠** When local altimeter setting not received, use Darlington altimeter setting and increase all MDA 60 feet, and S-8 Cat C/D visibility 1/8 mile and Circling Cat C/D visibility 1/4 mile. Procedure NA at night. Helicopter visibility reduction below 1 SM NA.

**MISSED APPROACH:** Climbing left turn to 2100 direct CTF VOR/DME and hold.

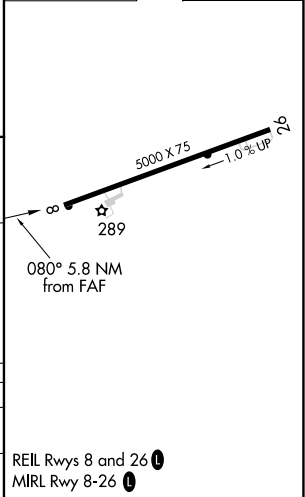
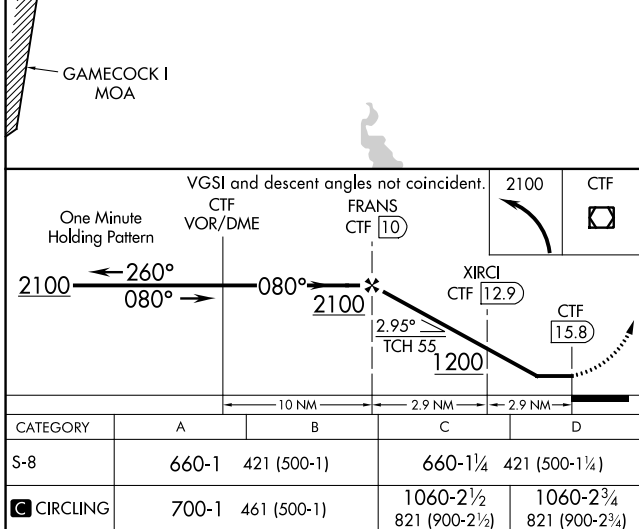
AWOS-3 <b>124.825</b>	FLORENCE APP CON ★ <b>118.6 341.7</b>	UNICOM <b>122.8</b> (CTAF) <b>0</b>
--------------------------	--	--



SE-2, 09 SEP 2021 to 07 OCT 2021

SE-2, 09 SEP 2021 to 07 OCT 2021

ELEV <b>239</b>	TDZE <b>239</b>
-----------------	-----------------



CATEGORY	A	B	C	D
S-8	660-1	421 (500-1)	660-1¼	421 (500-1¼)
<b>C</b> CIRCLING	700-1	461 (500-1)	1060-2½ 821 (900-2½)	1060-2¾ 821 (900-2¾)

REIL Rwy 8 and 26 **0**  
MIRL Rwy 8-26 **0**

# VOR/DME RWY 8