

WAAS CH 90323 W19A	APP CRS 187°	Rwy Idg TDZE 476 Apt Elev 489	5001 476 489
--	------------------------	---	---

RNAV (GPS) RWY 19

SULPHUR SPRINGS MUNI (SLR)

RNP APCH.

⚠ Circling NA east of Rwy 1-19. For uncompensated Baro-VNAV systems, LNAV/VNAV NA below -15°C or above 54°C.

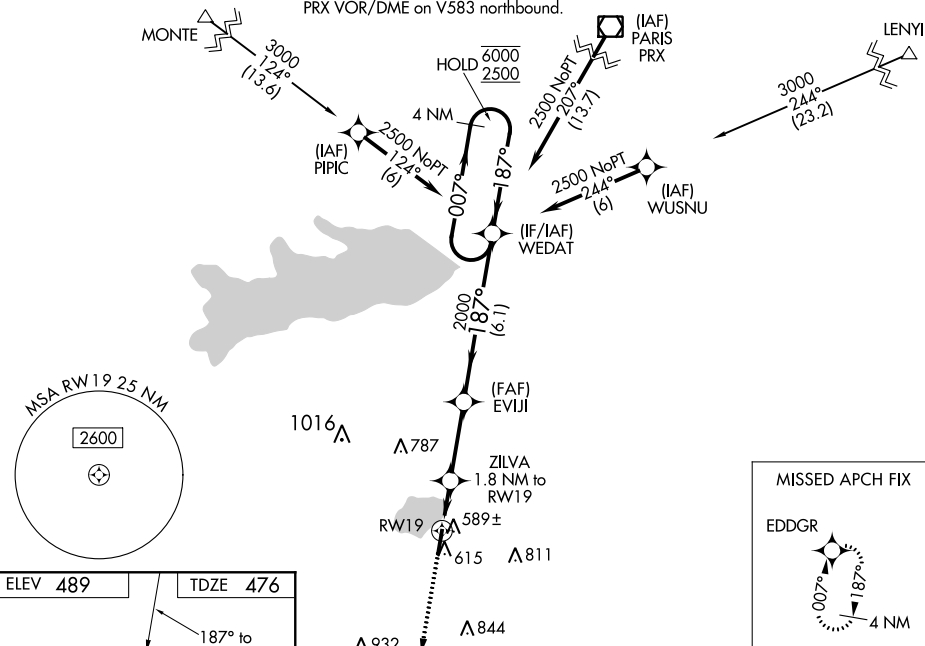
MISSED APPROACH: Climb to 3000 direct EDDGR and hold.

AWOS-3
118.35

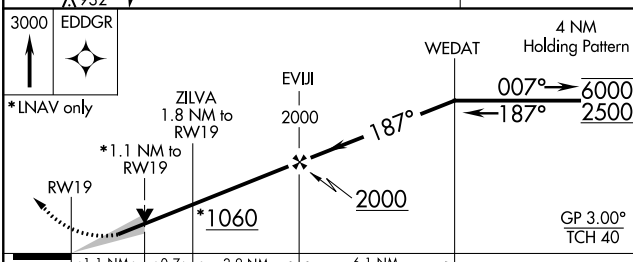
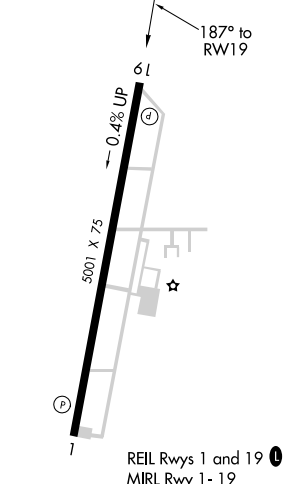
FORT WORTH CENTER
132.025 360.75

UNICOM
123.075 (CTAF) 0

Procedure NA for arrivals at PRX VOR/DME on V583 northbound.



ELEV 489	TDZE 476
----------	----------



CATEGORY	A	B	C	D
LPV DA		726-3/4 250 (300-3/4)		NA
LNAV/VNAV DA		776-1 300 (300-1)		NA
LNAV MDA		840-1 364 (400-1)		NA
C CIRCLING	940-1	451 (500-1)	1000-1 1/2 511 (600-1 1/2)	NA

SC-2, 09 SEP 2021 to 07 OCT 2021

SC-2, 09 SEP 2021 to 07 OCT 2021