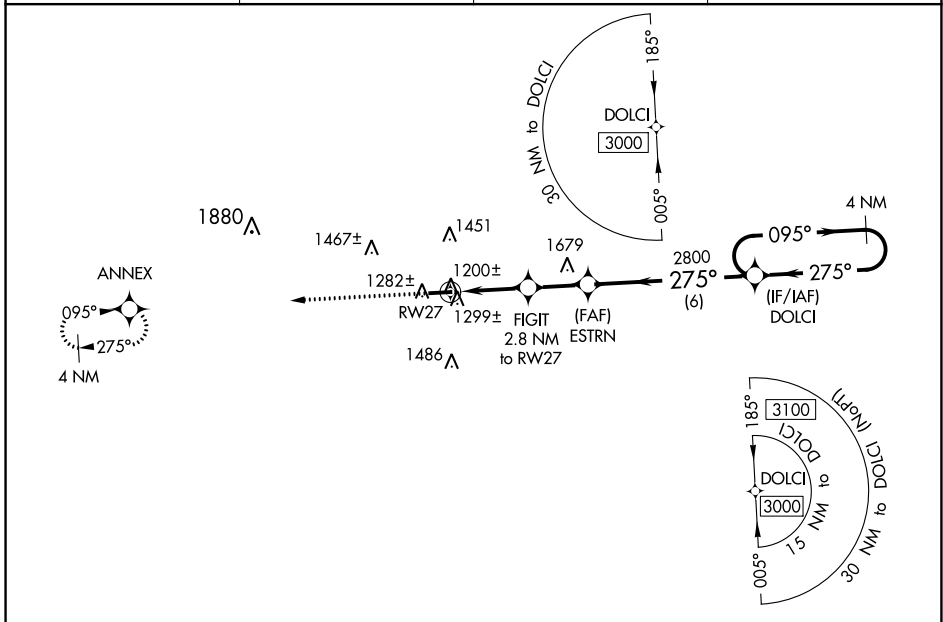


WAAS CH 57937 W27A	APP CRS 275°	Rwy Idg 4400 TDZE 1215 Apt Elev 1227
--	------------------------	---

RNAV (GPS) RWY 27

HOLMES COUNTY (10G)

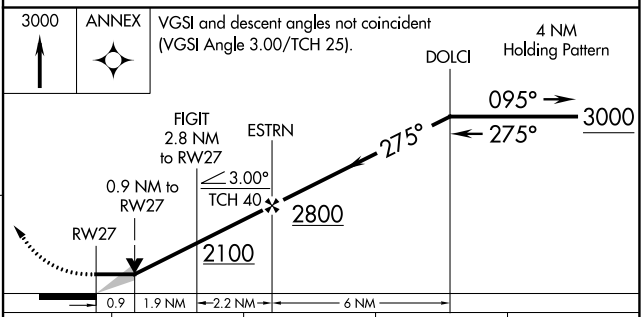
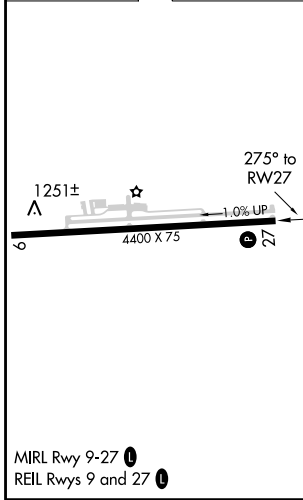
RNP APCH.			MISSED APPROACH: Climb to 3000 direct ANNEX and hold.
When local altimeter setting not received, use Wayne County altimeter setting and increase all MDA 60 feet. Increase LNAV Cat C/D and Circling Cat C/D visibility ¼ mile.			
AWOS-3 128.325	INDIANAPOLIS CENTER 124.45 370.9	UNICOM 123.0 (CTAF)	123.4



EC-2, 09 SEP 2021 to 07 OCT 2021

EC-2, 09 SEP 2021 to 07 OCT 2021

ELEV 1227	TDZE 1215
-----------	-----------



CATEGORY	A	B	C	D
LP MDA	1480-1		265 (300-1)	
LNAV MDA	1560-1		345 (400-1)	
CIRCLING	1760-1	533 (600-1)	1840-1¾ 613 (700-1¾)	1860-2 633 (700-2)