

WAAS CH 53701 W06A	APP CRS 059°	Rwy Idg TDZE Apt Elev	5500 547 547
----------------------------------------	------------------------	-----------------------------	-----------------------------------------

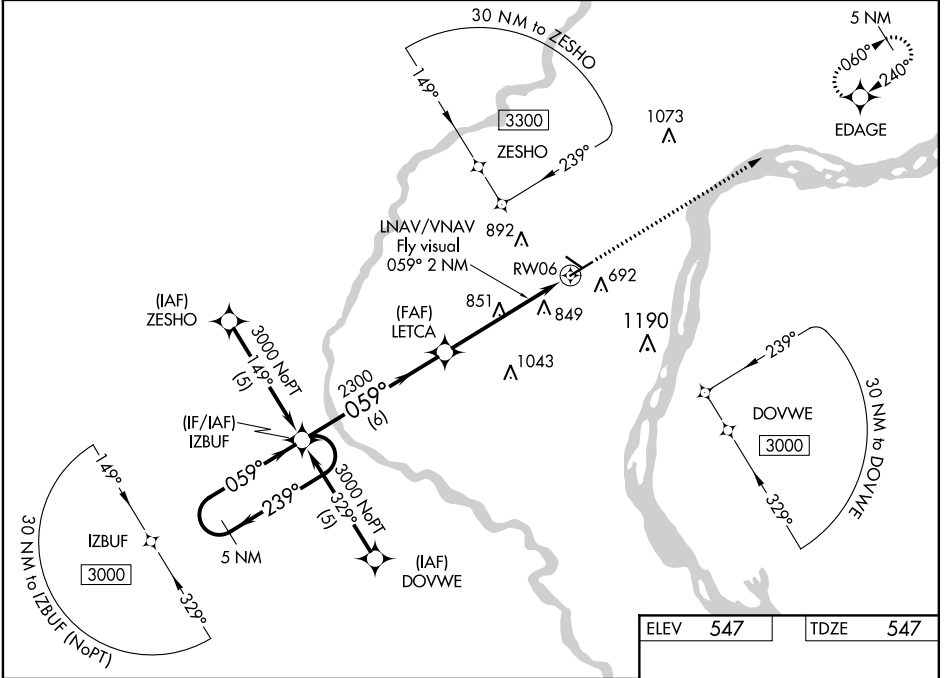
RNAV (GPS) RWY 6

MUSCATINE MUNI (MUT)

⚠ DME/DME RNP-0.3 NA. Visibility reductions by helicopters NA. For uncompensated Baro-VNAV systems, LNAV/VNAV NA below -16°C (4°F) or above 48°C (118°F). If local altimeter setting not received, use Iowa City Muni altimeter setting and increase all DAs/MDAs 80 feet. Baro-VNAV and VDP NA when using Iowa City Muni altimeter setting.

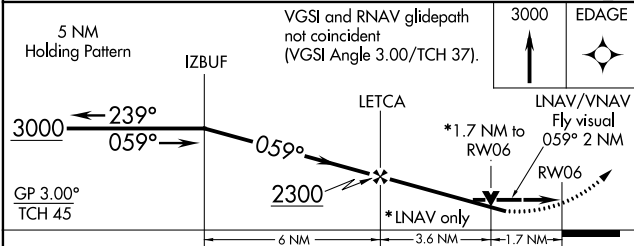
MISSED APPROACH: Climb to 3000 direct EDAGE and hold.

AWOS-3 119.775	QUAD CITY APP CON * 133.275 257.8	CLNC DEL 119.125	UNICOM 122.7 (CTAF) 0
--------------------------	---------------------------------------------	----------------------------	---------------------------------

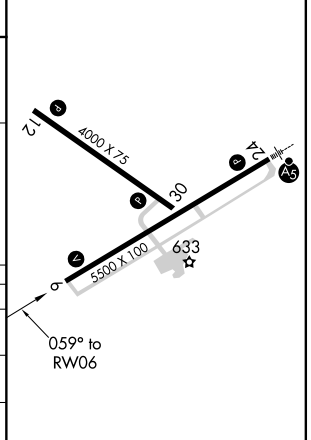


NC-3, 09 SEP 2021 to 07 OCT 2021

NC-3, 09 SEP 2021 to 07 OCT 2021



ELEV 547	TDZE 547
----------	----------



CATEGORY	A	B	C	D
LPV DA	1076-2 529 (600-2)			
LNAV/VNAV DA	1232-2 685 (700-2)		1232-2¼ 685 (700-2¼)	
LNAV MDA	1120-1 573 (600-1)	1120-1½ 573 (600-1½)		1120-1¾ 573 (600-1¾)
CIRCLING	1120-2½ 573 (600-2½)	1160-2½ 613 (700-2½)	1200-2½	653 (700-2½)

REIL Rwy 6, 12, and 30 0
MIRL Rwy 6-24 and 12-30 0