

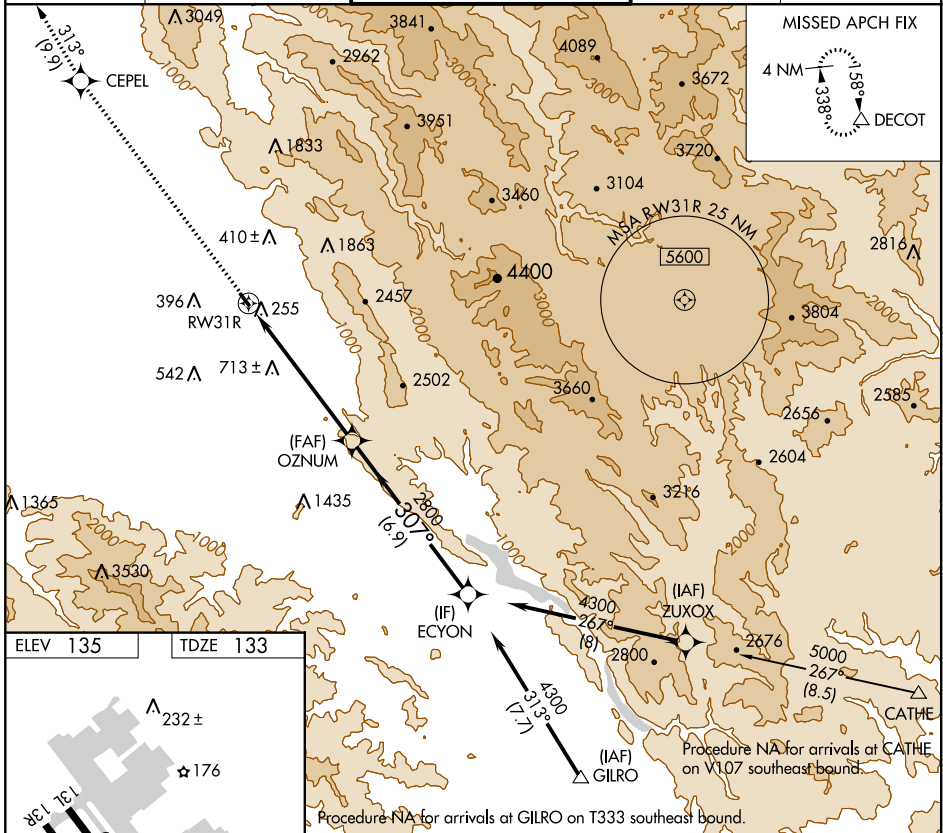
WAAS CH <b>58316</b> <b>W31A</b>	APP CRS <b>307°</b>	Rwy Idg TDZE Apt Elev	<b>2690</b> <b>133</b> <b>135</b>
--	------------------------	-----------------------------	---

# RNAV (GPS) Z RWY 31R

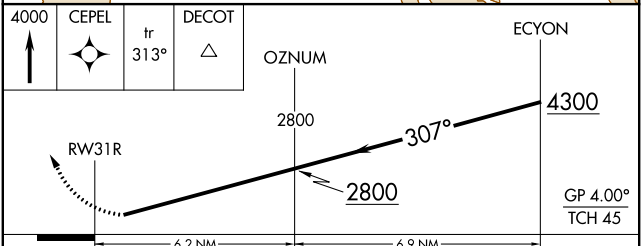
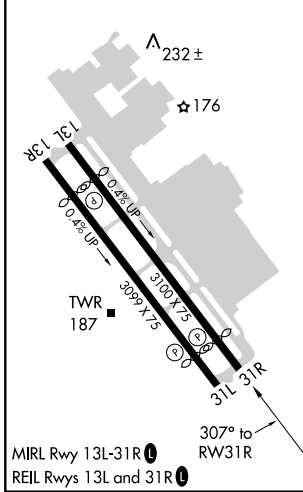
REID-HILLVIEW OF SANTA CLARA COUNTY (R.H.V)

RNP APCH.		When control tower closed, use Norman Y Mineta San Jose Intl altimeter setting and increase DA to 558 feet and visibility to 1¼ SM. Rwy 31R helicopter visibility reduction below ¾ SM NA.		MISSED APPROACH: Climb to 4000 direct CEPEL and on track 313° to DECOT and hold.	
-----------	--	--	--	--	--

ATIS <b>125.2</b>	NORCAL APP CON <b>120.1 290.25</b>	REID-HILLVIEW TOWER* (Rwy 13L-31R) (Rwy 13R-31L) <b>119.8 (CTAF) 126.1</b>	GND CON <b>121.65</b>	UNICOM <b>122.95</b>
----------------------	---------------------------------------	--	--------------------------	-------------------------



ELEV 135	TDZE 133
----------	----------



CATEGORY	A	B	C	D
LPV DA	533-1¼	400 (400-1¼)	NA	

SW-2, 09 SEP 2021 to 07 OCT 2021

SW-2, 09 SEP 2021 to 07 OCT 2021