

WAAS CH 81927 W07A	APP CRS 073°	Rwy Idg TDZE Apt Elev	4491 730 730
--	------------------------	-----------------------------	---

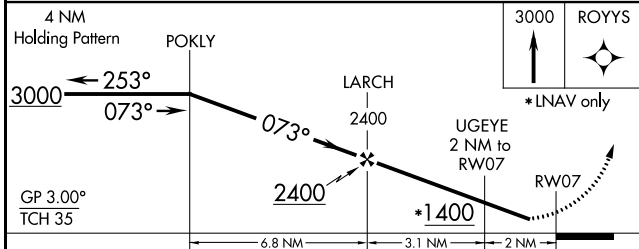
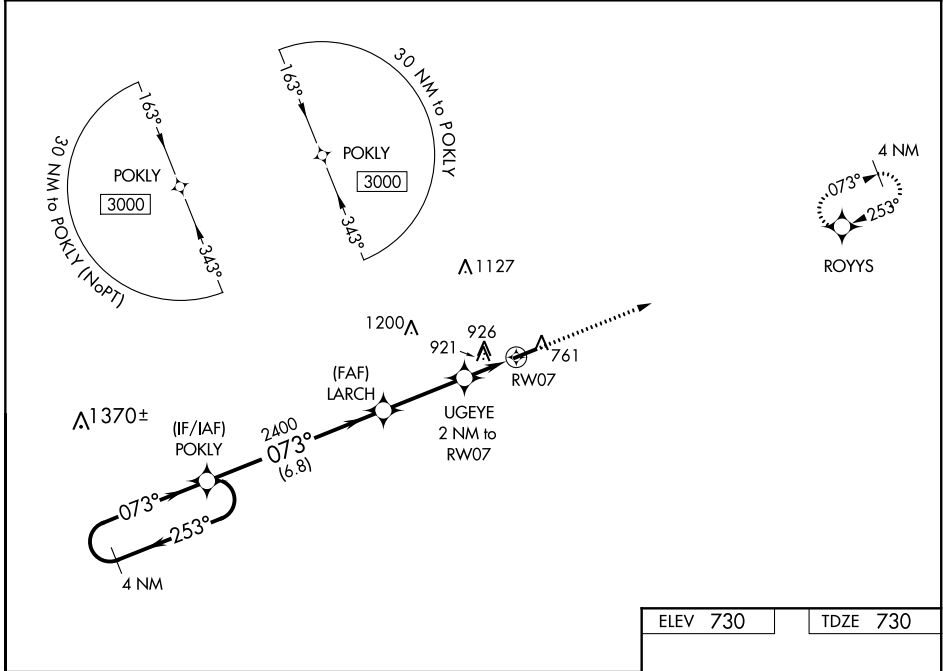
RNAV (GPS) RWY 7

WILLIAMS COUNTY (ØG6)

NA Baro-VNAV NA. When VGSi inop, Straight-in/Circling Rwy 7 procedure NA at night. DME/DME RNP-0.3 NA. Visibility reduction by helicopters NA. Use Defiance Memorial altimeter setting; when not received, use De Kalb County altimeter setting and increase all DA/MDA 60 feet, increase LPV visibility 1/8 mile all Cats, LNAV/VNAV 1/4 mile all Cats and LNAV Cat C/D and Circling Cat C visibility 1/4 mile.

MISSED APPROACH:
Climb to 3000 direct ROYYS and hold.

DFI ASOS 121.425	TOLEDO APP CON 134.35 307.0	UNICOM 122.8 (CTAF)	123.0
----------------------------	---------------------------------------	-------------------------------	--------------



ELEV 730	TDZE 730
3000	ROYYS
GP 3.00° TCH 35	*LNAV only
4782 x 75	073° to RWY 7
LIRL Rwy 7-25	REIL Rws 7 and 25

CATEGORY	A	B	C	D
LPV DA	1003-1		273 (300-1)	
LNAV/VNAV DA	1240-1 3/4		510 (600-1 3/4)	
LNAV MDA	1260-1	530 (600-1)	1260-1 1/2	530 (600-1 1/2)
CIRCLING	1300-1	570 (600-1)	1300-1 1/2	1300-2
			570 (600-1 1/2)	570 (600-2)

EC-2, 09 SEP 2021 to 07 OCT 2021

EC-2, 09 SEP 2021 to 07 OCT 2021