

RNAV (GPS) RWY 24

LAKEWOOD (N12)

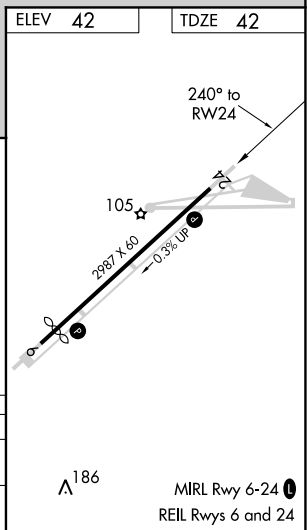
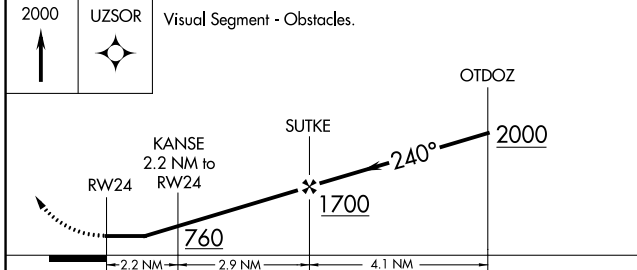
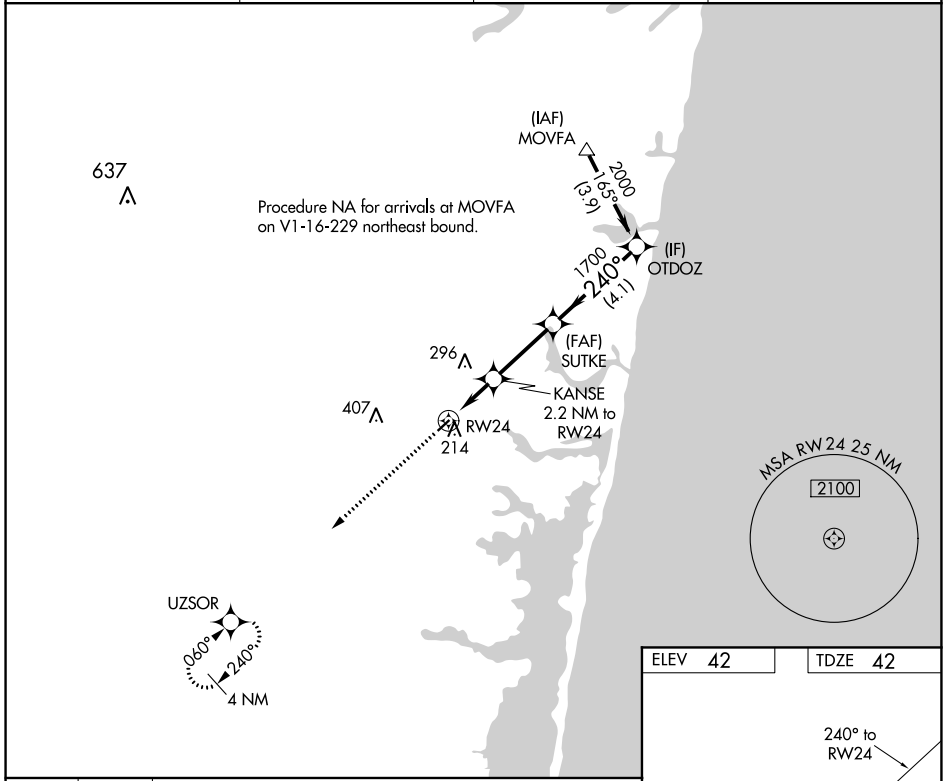
APP CRS	Rwy Idg	2987
240°	TDZE	42
	Apt Elev	42

RNP APCH.

NA Procedure NA at night. When local altimeter setting not received, use Lakehurst altimeter setting and increase all MDA 40 feet. Rwy 24 helicopter visibility reduction below 1 SM NA.

MISSED APPROACH:
Climb to 2000 direct UZSOR and hold.

AWOS-AV 122.8	MC GUIRE APP CON 126.475 363.8	GCO 121.725	UNICOM 122.8 (CTAF)
-------------------------	--	-----------------------	-------------------------------



CATEGORY	A	B	C	D
LNVA MDA	520-1	478 (500-1)		NA
C CIRCLING	540-1 498 (500-1)	620-1 578 (600-1)		NA

NE-2, 09 SEP 2021 to 07 OCT 2021

NE-2, 09 SEP 2021 to 07 OCT 2021