

WAAS CH 90228 W09A	APP CRS 095°	Rwy Idg TDZE Apt Elev	5004 753 754
--	------------------------	-----------------------------	---

RNAV (GPS) RWY 9

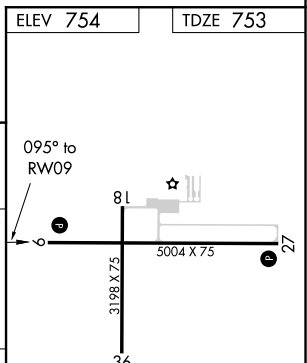
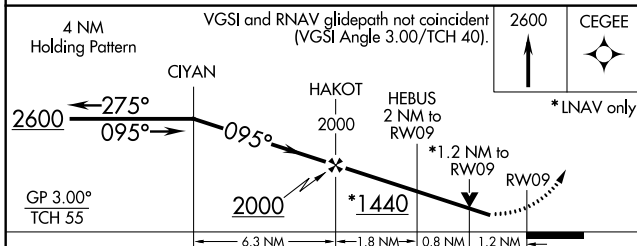
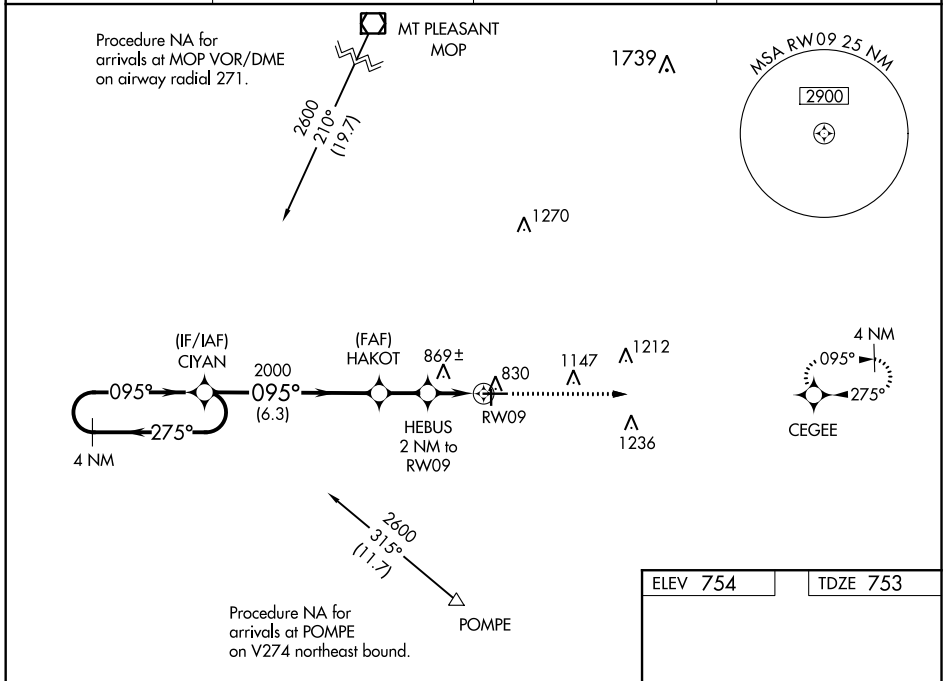
GRATIOT COMMUNITY (AMN)

RNP APCH.

⚠ Baro-VNAV NA when using Mount Pleasant altimeter setting. For uncompensated Baro-VNAV systems, LNAV/VNAV NA below -16°C or above 39°C. Rwy 9 helicopter visibility reduction below 3/4 SM NA. When local altimeter setting not received, use Mount Pleasant altimeter setting and increase all DA 42 feet and VNAV all Cats visibility 1/8 mile, increase all MDA 60 feet, and LNAV Cat C and D visibility 1/4 mile. VDP NA when using Mount Pleasant altimeter setting.

MISSED APPROACH: Climb to 2600 direct CEGEE and hold.

AWOS-3P 124.175	GREAT LAKES APP CON* 126.45 235.625	CLNC DEL 119.25	UNICOM 122.8 (CTAF) 📶
---------------------------	---	---------------------------	--



CATEGORY	A	B	C	D
LPV DA	1028-1		275 (300-1)	
LNAV/VNAV DA	1156-1 3/8		403 (500-1 3/8)	
LNAV MDA	1160-1 407 (500-1)		1160-1 1/8 407 (500-1 1/8)	

REIL Rwy 9 and 27 **📶**
MIRL Rwy 9-27 and 18-36 **📶**

EC-1, 09 SEP 2021 to 07 OCT 2021

EC-1, 09 SEP 2021 to 07 OCT 2021