

VOR/DME MOP 110.6 Chan 43	APP CRS 178°	Rwy ldg 3198 TDZE 753 Apt Elev 754
---	------------------------	---

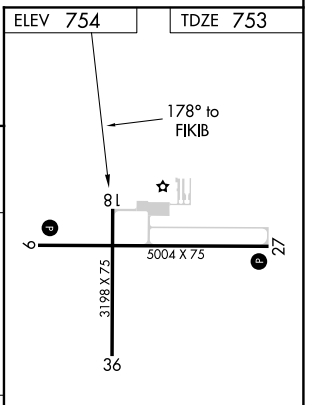
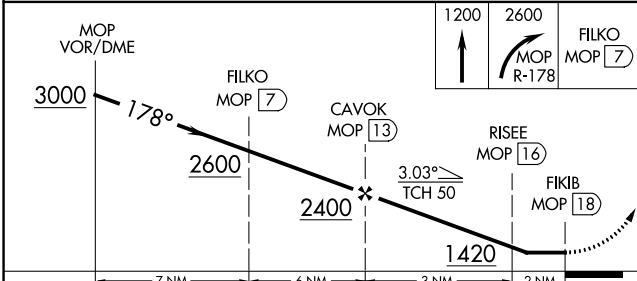
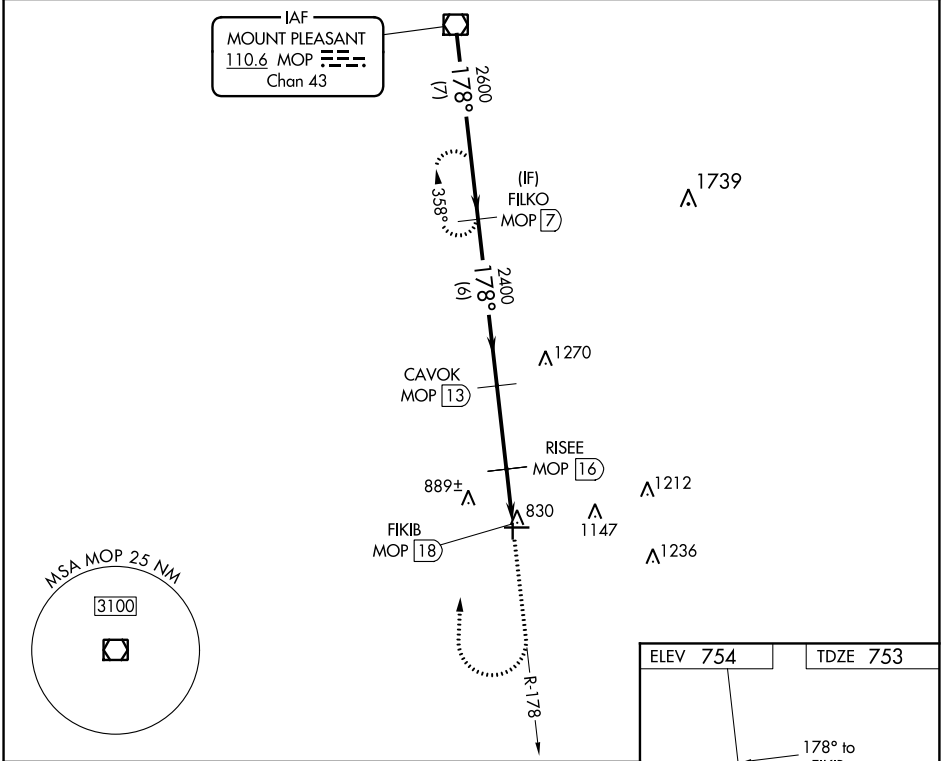
VOR RWY 18

GRATIOT COMMUNITY (AMN)

⚠ NA Night landing: Rwy 18, 36 NA. DME required.
Straight-in Rwy 18 NA at night, Circling Rwy 18, 36 NA at night. Rwy 18 helicopter visibility reduction below 1 SM NA.

MISSED APPROACH: Climb to 2000 then climbing right turn to 2600 on MOP VOR/DME R-178 direct FILKO/MOP VOR/DME 7 DME and hold.

AWOS-3P 124.175	GREAT LAKES APP CON* 126.45 235.625	CLNC DEL 119.25	UNICOM 122.8 (CTAF) 📻
---------------------------	---	---------------------------	--



CATEGORY	A	B	C	D
S-18	1140-1	387 (400-1)	1140-1¼ 387 (400-1¼)	NA
CIRCLING	1180-1 426 (500-1)	1220-1 466 (500-1)	1220-1½ 466 (500-1½)	NA

REIL Rwys 9 and 27 **📻**
MRL Rwys 9-27 and 18-36 **📻**

EC-1, 09 SEP 2021 to 07 OCT 2021

EC-1, 09 SEP 2021 to 07 OCT 2021