

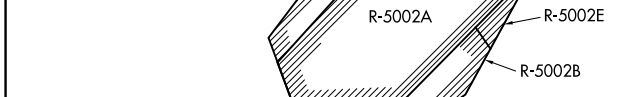
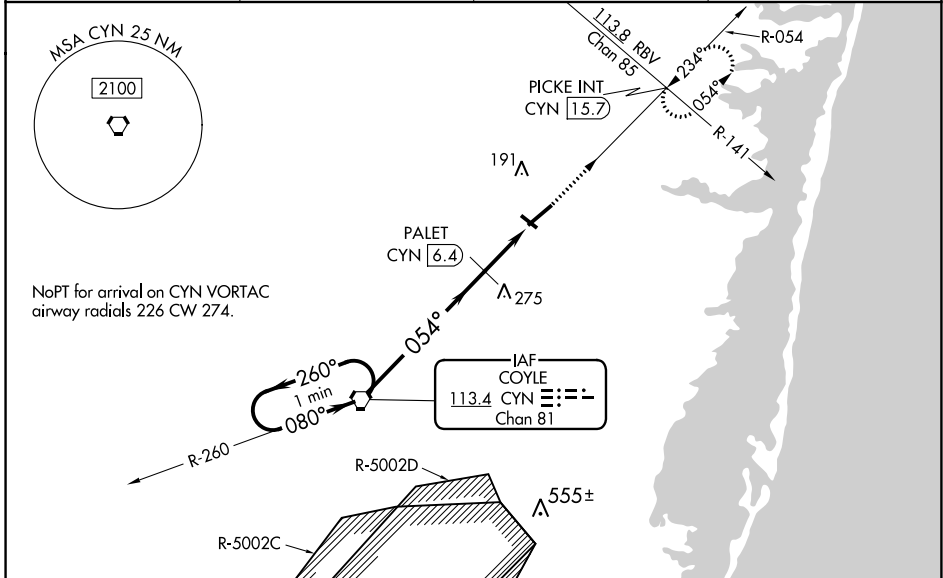
VORTAC CYN <b>113.4</b> Chan <b>81</b>	APP CRS <b>054°</b>	Rwy Idg <b>5950</b> TDZE <b>81</b> Apt Elev <b>81</b>
--	------------------------	---

**VOR RWY 6**  
OCEAN COUNTY (MJX)

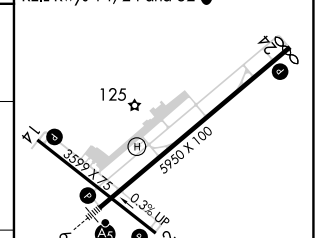
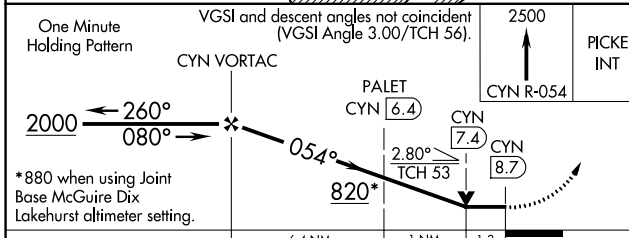
**NA** Circling Rwy 14, 32 NA at night. For inop MALSR, increase S-6 Cat A visibility to 1, S-6 Cats C/D visibility to 2, and PALET Fix Minimums S-6 Cats A/B visibility to 1. When local altimeter setting not received, use Mc Guire Fld (Joint Base Mc Guire Dix Lakehurst) altimeter setting and increase all MDA 60 feet; increase S-6 Cats C/D visibility 1/8 mile, Circling Cat C visibility 1/2 mile, and Circling Cat D visibility 1/4 mile; increase PALET Fix Minimums Circling Cat D visibility 1/4 mile. For inop MALSR when using Mc Guire Fld (Joint Base Mc Guire Dix Lakehurst) altimeter setting, increase S-6 Cat A visibility to 1, Cats C/D visibility to 2 1/2, and PALET Fix Minimums Cats A/B visibility to 1. Helicopter visibility reduction below 3/4 SM NA. VDP NA when using Mc Guire Fld (Joint Base Mc Guire Dix Lakehurst) altimeter setting.

**MALSR** MISSED APPROACH: Climb to 2500 on CYN R-054 to PICKE INT/CYN 15.7 DME and hold.

AWOS-3PT <b>119.875</b>	MC GUIRE APP CON <b>126.475 363.8</b>	GCO <b>121.725</b>	UNICOM <b>122.7 (CTAF)</b>
----------------------------	--	-----------------------	-------------------------------



ELEV <b>81</b>	TDZE <b>81</b>
MRL Rwy 14-32 <b>1</b>	
HIRL Rwy 6-24 <b>1</b>	121 <b>A</b>
REIL Rwys 14, 24 and 32 <b>1</b>	



CATEGORY	A	B	C	D
S-6	820-3/4	739 (800-3/4)	820-1 3/4	739 (800-1 3/4)
<b>C</b> CIRCLING	820-1	739 (800-1 1/4)	820-2	820-2 1/4
	739 (800-1)	739 (800-1 1/4)	739 (800-2)	739 (800-2 1/4)
PALET FIX MINIMUMS				
S-6	540-3/4	459 (500-3/4)	540-1	459 (500-1)
<b>C</b> CIRCLING	540-1	560-1	580-1 1/2	700-2
	459 (500-1)	479 (500-1)	499 (500-1 1/2)	619 (700-2)

FAF to MAP 8.7 NM					
Knots	60	90	120	150	180
Min:Sec	8:42	5:48	4:21	3:29	2:54

NE-2, 09 SEP 2021 to 07 OCT 2021

NE-2, 09 SEP 2021 to 07 OCT 2021