

WAAS CH <b>69527</b> W01A	APP CRS <b>007°</b>	Rwy Idg TDZE Apt Elev	<b>4204</b> <b>2694</b> <b>2694</b>
---------------------------------	------------------------	-----------------------------	---

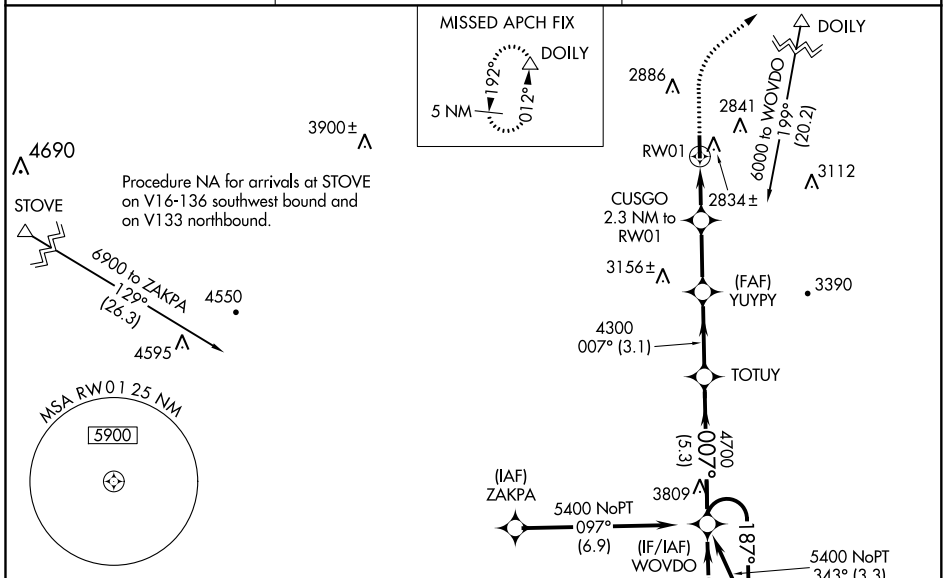
# RNAV (GPS) RWY 1

TWIN COUNTY (HLX)

**⚠** Baro-VNAV NA when using Dublin altimeter setting. For uncompensated Baro-VNAV systems, LNAV/VNAV NA below -20°C (-4°F) or above 54°C (130°F). DME/DME RNP-0.3 NA. Visibility reduction by helicopters NA. VDP NA with Dublin altimeter setting. When local altimeter setting not received, use Dublin altimeter setting and increase all DA 137 feet and all MDA 140 feet, increase LPV all Cats visibility, LNAV/VNAV all Cats visibility and LNAV Cats C/D visibility ½ mile, and increase Circling Cats C/D visibility ¼ mile.

**MISSED APPROACH:** Climb to 3200 then climbing right turn to 5100 direct DOILY and hold, continue climb-in-hold to 5100.

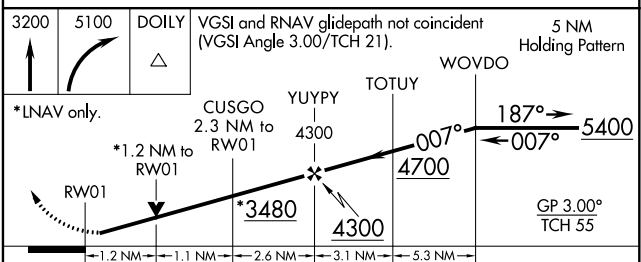
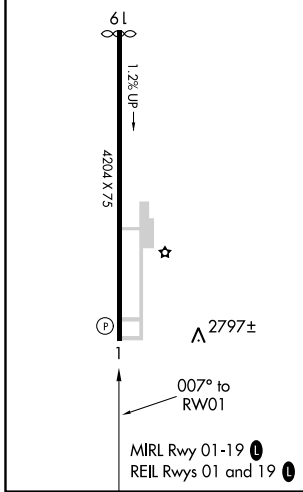
AWOS-3 <b>118.375</b>	ROANOKE APP CON <b>126.0 339.8</b>	UNICOM <b>122.8 (CTAF) 0</b>
--------------------------	---------------------------------------	---------------------------------



NE-3, 09 SEP 2021 to 07 OCT 2021

NE-3, 09 SEP 2021 to 07 OCT 2021

ELEV 2694	TDZE 2694
-----------	-----------



CATEGORY	A	B	C	D
LPV DA		2965-1	271 (300-1)	
LNAV/VNAV DA		3016-1	322 (400-1)	
LNAV MDA	3100-1	406 (500-1)	3100-1½	406 (500-1½)
CIRCLING	3200-1	506 (600-1)	3200-1½	3260-2 566 (600-2)