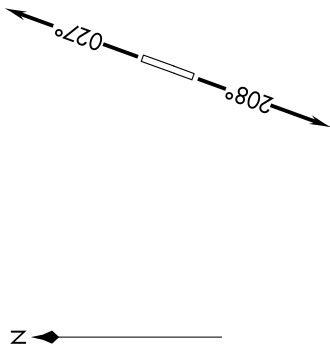


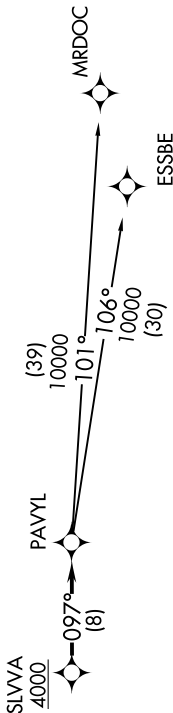
EC-1, 09 SEP 2021 to 07 OCT 2021

**TOP ALTITUDE:  
ASSIGNED BY ATC**



AWOS-3  
119.075  
CTAF  
122.7  
DETROIT DEP CON  
134.3 284.0

NOTE: RNAV 1.  
NOTE: RADAR required.  
NOTE: DME/DME/IRU or GPS required.  
NOTE: Turboplet departures at/above 10000, maintain 280K until advised by ATC.



TAKEOFF MINIMUMS:  
Standard.

NOTE: Chart not to scale.

**DEPARTURE ROUTE DESCRIPTION**

TAKEOFF RUNWAY 3: Climb on heading 027° or as assigned for RADAR vectors to cross SLVVA at or above 4000, thence....  
TAKEOFF RUNWAY 21: Climb on heading 208° or as assigned for RADAR vectors to cross SLVVA at or above 4000, thence....

....on track 097° to PAVYL, then on (transition). Maintain ATC assigned altitude, expect filed altitude 10 minutes after departure.

ESSBE TRANSITION (PAVYL2.ESSBE):  
MRDOC TRANSITION (PAVYL2.MRDOC):



EC-1, 09 SEP 2021 to 07 OCT 2021