

WAAS CH <b>86707</b> <b>W21A</b>	APP CRS <b>208°</b>	Rwy Idg TDZE <b>616</b> Apt Elev <b>616</b>	<b>4997</b>
--	------------------------	---	-------------

# RNAV (GPS) RWY 21

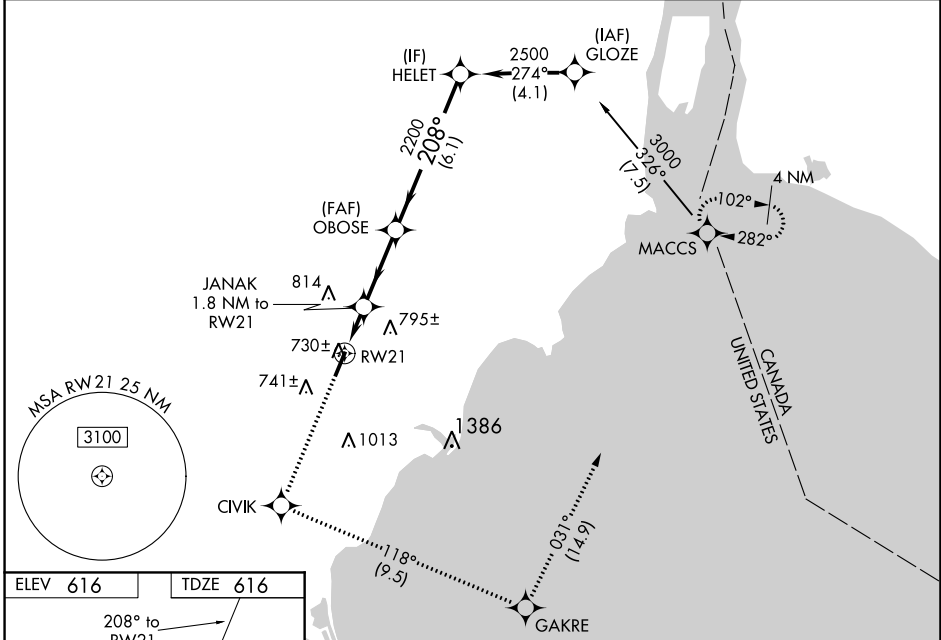
CUSTER (TTF)

RNP APCH.

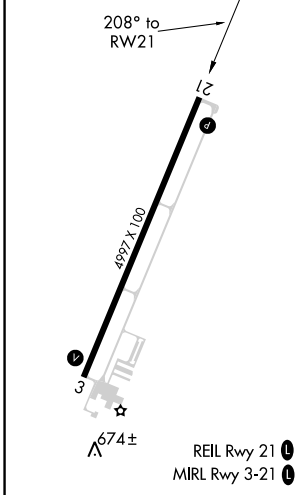
▼ For uncompensated Baro-VNAV systems, LNAV/VNAV NA below -16°C (4°F) or above 47°C (116°F). When local altimeter setting not received, use Detroit Metro Wayne County altimeter setting and increase LPV DA 43 feet and all visibilities ¼ SM, LNAV/VNAV DA 138 feet and all visibilities ½ SM and all MDA 60 feet and Cat C visibilities ¼ SM. Baro-VNAV and VDP NA when using Detroit Metro Wayne County altimeter setting.

MISSED APPROACH:  
Climb to 3000 direct CIVIK and on track 118° to GAKRE and on track 031° to MACCS and hold.

AWOS-3 <b>119.075</b>	DETROIT APP CON <b>134.3 363.2</b>	UNICOM <b>122.7 (CTAF)</b>
--------------------------	---------------------------------------	-------------------------------



ELEV 616	TDZE 616
----------	----------



3000 CIVIK	GAKRE	MACCS	VGS1 and RNAV glidepath not coincident (VGS1 Angle 3.50/TCH 49).	
↑	tr 118°	tr 031°	HELET	
*LNAV only.		JANAK 1.8 NM to RW21	OBOSE 2200	2500
*0.9 NM RW21 to RW21		*1220	2200	GP 3.00° TCH 42
0.9 NM		0.9 NM	3 NM	6.1 NM
CATEGORY	A	B	C	D
LPV DA	966-1¼ 350 (400-1¼)			
LNAV/VNAV DA	1009-1½ 393 (400-1½)			
LNAV MDA	980-1 364 (400-1)			980-1¼ 364 (400-1¼)
CIRCLING	1120-1 504 (600-1)	1180-1 564 (600-1)	1180-1½ 564 (600-1½)	1180-2 564 (600-1)