

NDB TII 269	APP CRS 250°	Rwy Idg TDZE Apt Elev	4000 785 786
-----------------------	------------------------	-----------------------------	---

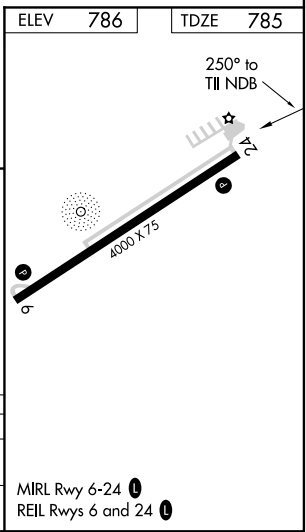
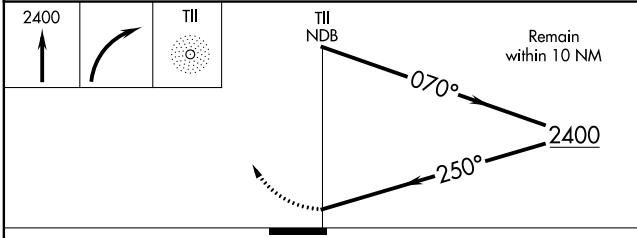
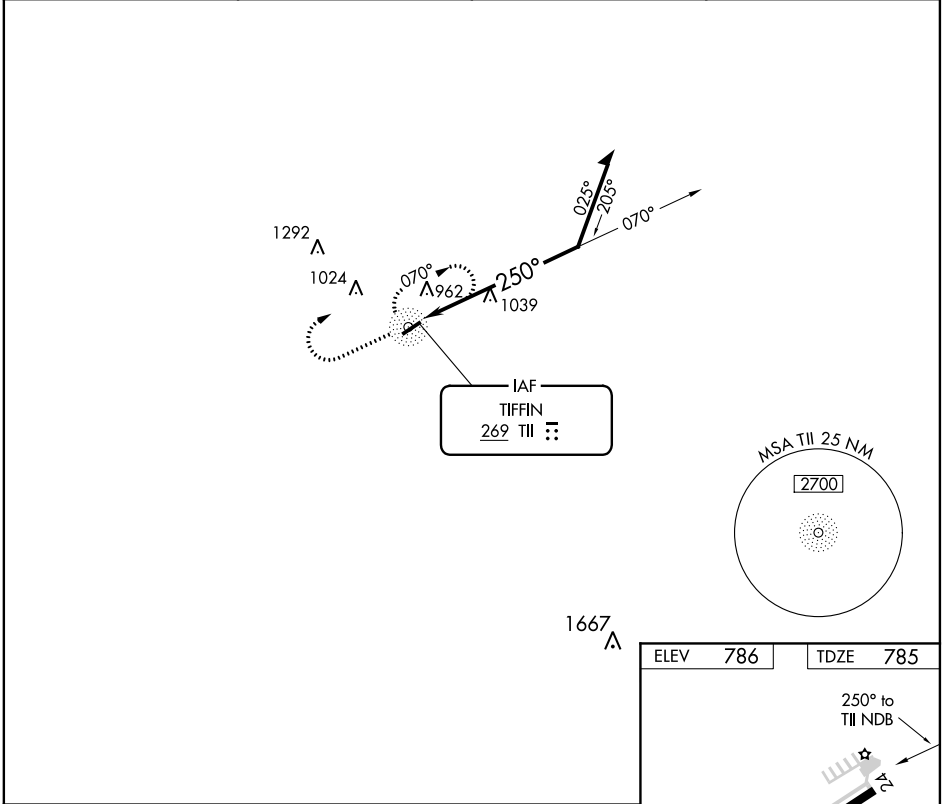
NDB RWY 24

SENECA COUNTY (16G)

▽ Rwy 24 helicopter visibility reduction below 1 SM NA. When local altimeter setting not received, use Findlay altimeter setting and increase all MDA 60 feet and increase S-24 Cat C visibility 1/8 SM. Straight-in Rwy 24 NA at night, Circling Rwy 24 NA at night.

MISSED APPROACH: Climb to 2400 then right turn direct TII NDB and hold.

AWOS-3 127.175	FDY ASOS 132.85	TOLEDO APP CON 120.8 317.55	UNICOM 123.0 (CTAF) ①
--------------------------	---------------------------	---------------------------------------	--



CATEGORY	A	B	C	D
S-24	1460-1	675 (700-1)	1460-1 7/8 675 (700-1 7/8)	1460-2 675 (700-2)
CIRCLING	1460-1	674 (700-1)	1460-2 674 (700-2)	1460-2 1/4 674 (700-2 1/4)

MIRL Rwy 6-24 **①**
REIL Rws 6 and 24 **①**

EC-2, 09 SEP 2021 to 07 OCT 2021

EC-2, 09 SEP 2021 to 07 OCT 2021