

SW-4, 09 SEP 2021 to 07 OCT 2021

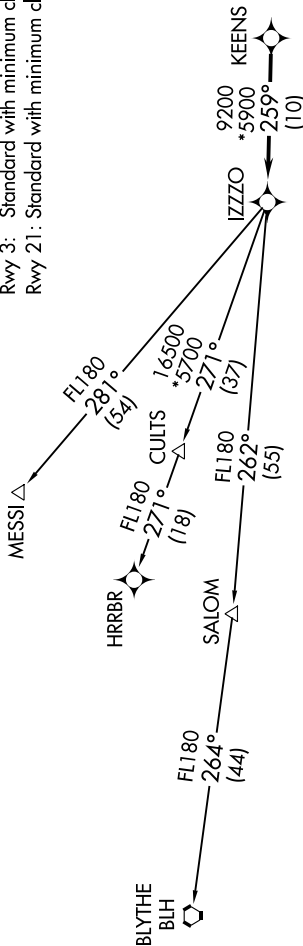
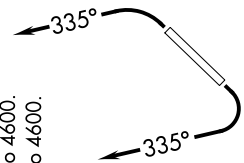
**TOP ALTITUDE:  
ASSIGNED BY ATC**

ATIS \*  
118.6  
CLNC DEL  
124.8  
GND.CON  
121.6  
SCOTTSDALE TOWER \*  
119.9  
PHOENIX DEP CON  
120.7 239.0

- NOTE: RNAV 1.
- NOTE: Turbojets and turboprops only.
- NOTE: RADAR required.
- NOTE: GPS required.
- NOTE: Aircraft requesting FL220 and below must file BLYTHE TRANSITION.
- NOTE: Turbojets landing LAX, file MESSI TRANSITION.
- NOTE: Aircraft landing other than LAX and turboprops landing at LAX: Requesting FL240 and above, file HRRBR TRANSITION.
- NOTE: Aircraft departing KGEU and KGYR ATC assigned only.
- NOTE: Rwy 21: Do not exceed 210K until established on assigned heading.

TAKEOFF MINIMUMS

Rwy 3: Standard with minimum climb of 445' per NM to 4600.  
Rwy 21: Standard with minimum climb of 300' per NM to 4600.



**DEPARTURE ROUTE DESCRIPTION**

**TAKEOFF RUNWAY 3:** Climbing left turn heading 335° or as assigned by ATC, thence. . . .  
**TAKEOFF RUNWAY 21:** Climbing right turn heading 335° or as assigned by ATC. Thence. . . .  
 . . . expect RADAR vectors to KEENS, then on track 259° to IZZZO, then on (transition).  
 Maintain ATC assigned altitude, expect filed altitude 3 minutes after departure.

- BLYTHE TRANSITION (IZZZO7.BLH)
- HRRBR TRANSITION (IZZZO7.HRRBR)
- MESSI TRANSITION (IZZZO7.MESSI)

NOTE: Chart not to scale.

SW-4, 09 SEP 2021 to 07 OCT 2021